

Joshua Falls to Yeat
765kV Electric Transmission Line Project

Structure Comparison

This image represents typical structures for the project.
Final design is subject to change pending public, engineering, and regulatory review.



150'

100'

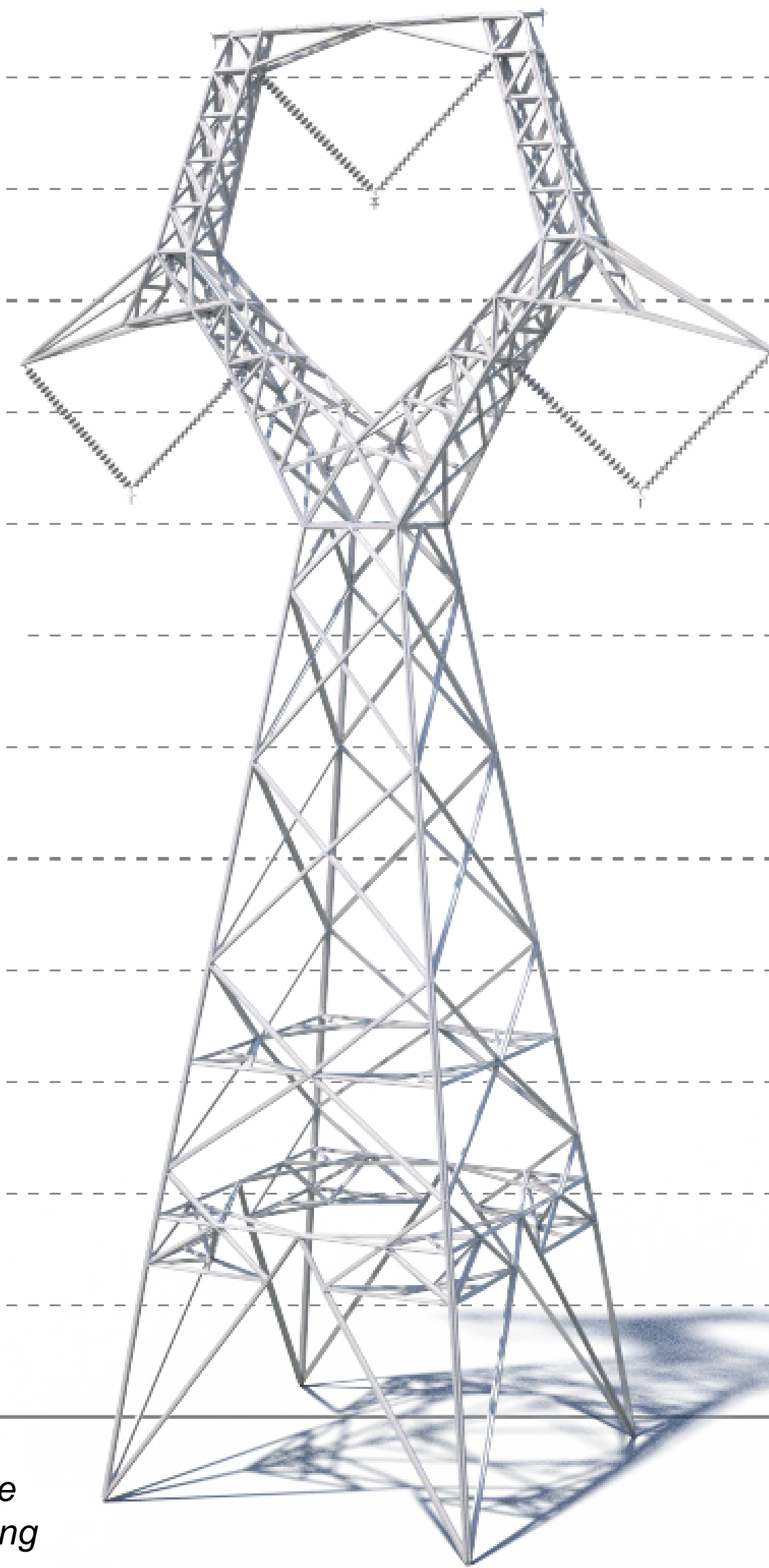
50'

0'

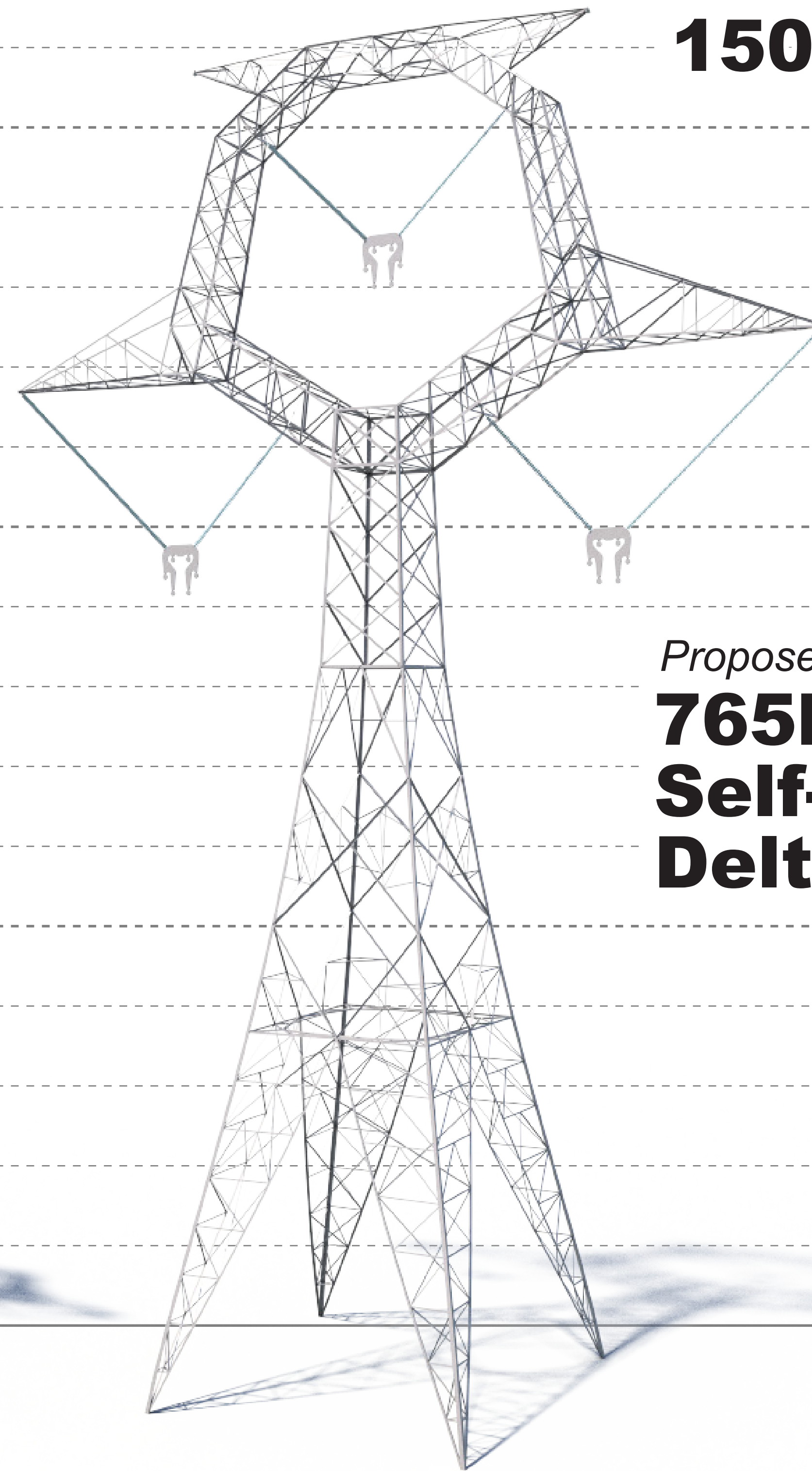
110'-135' Tall

150'-175' Tall

Typical Existing
**500kV
Lattice
Structure**



Proposed
**765kV
Self-Supporting
Delta Structure**



This structure represents a typical existing structure in Dominion Energy's service territory. Actual existing structures will vary.

Joshua Falls to Yeat
765kV Electric Transmission Line Project

**Typical
Structure
Comparison**

This image represents typical structures for the project.
Final design is subject to change pending public,
engineering, and regulatory review.

