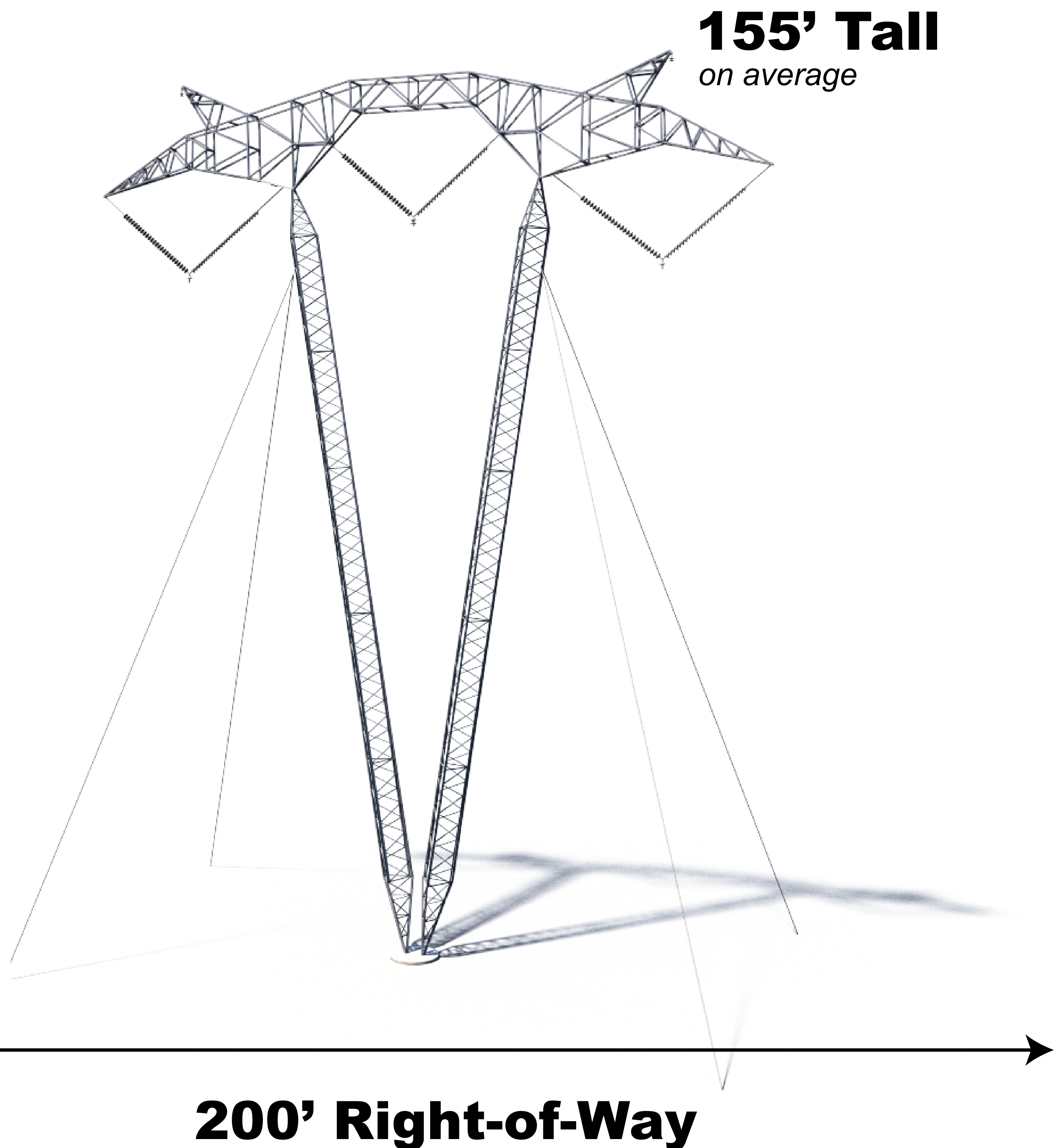




Joshua Falls to Yeat

765kV Electric Transmission Line Project

765kV Guyed Vee



This image represents a typical structure for the project.
Final design is subject to change pending public,
engineering, and regulatory review.

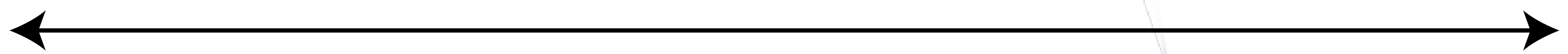
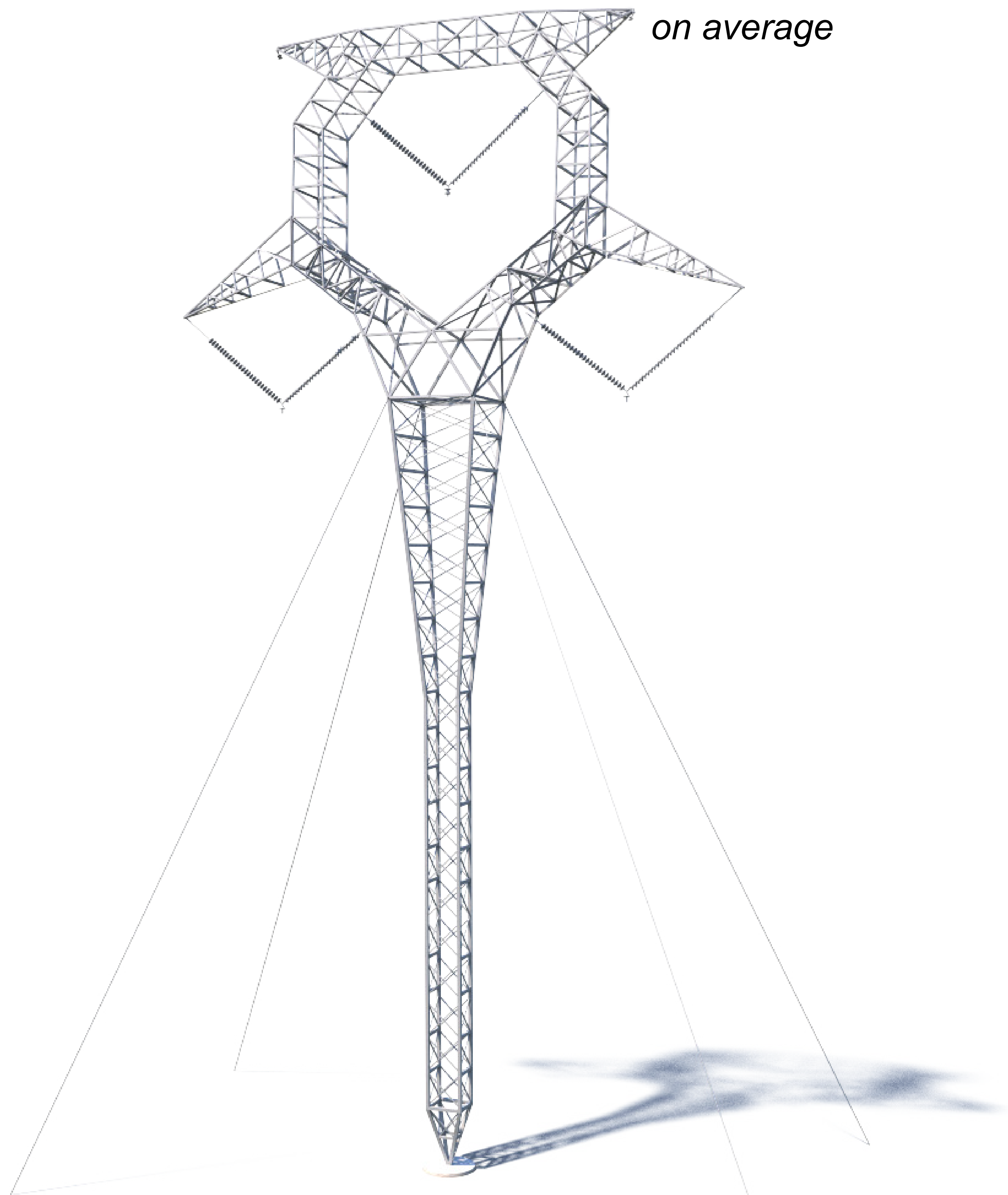


Joshua Falls to Yeat

765kV Electric Transmission Line Project

765kV Guyed Y

175' Tall
on average



200' Right-of-Way

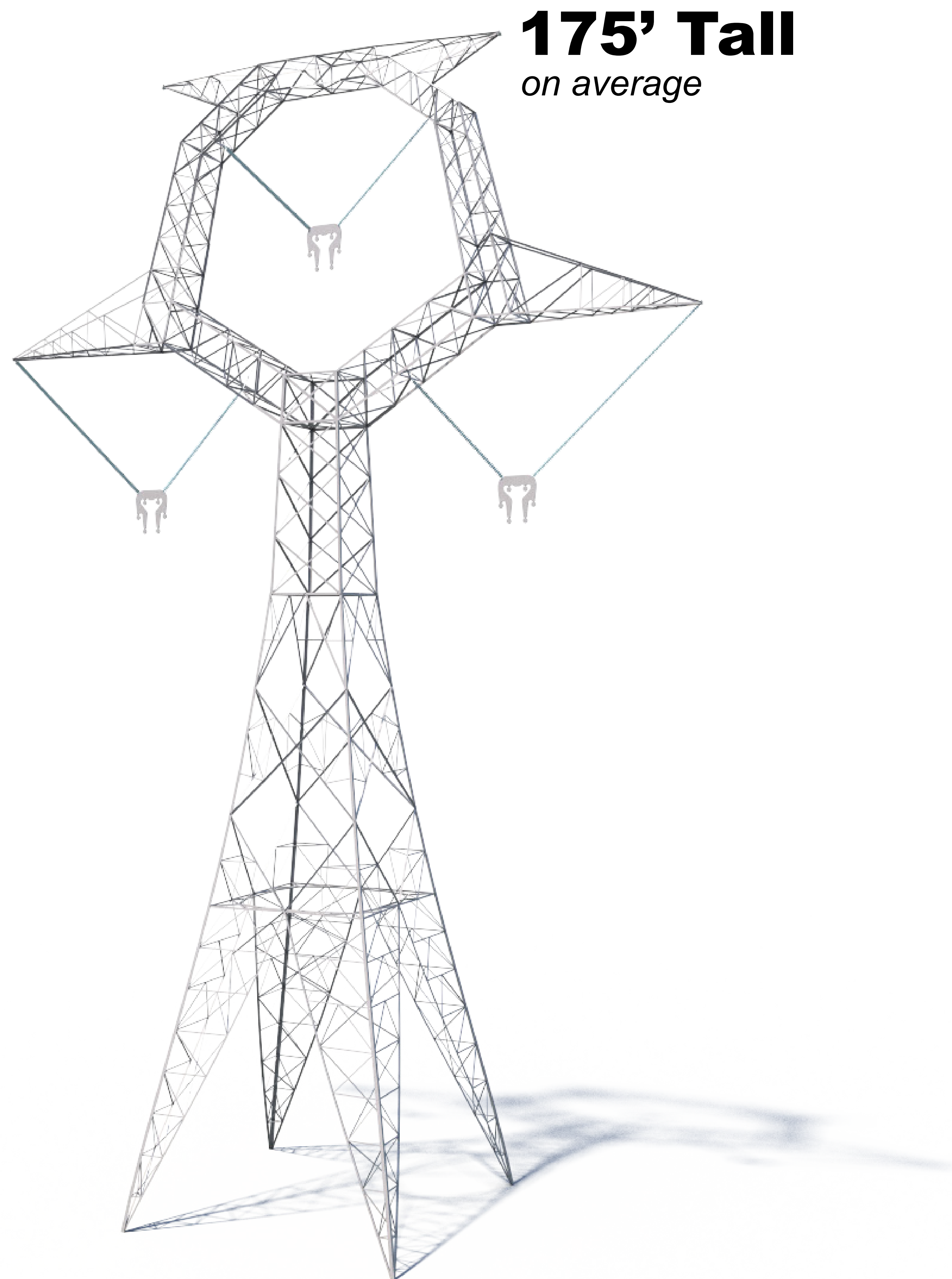
This image represents a typical structure for the project.
Final design is subject to change pending public,
engineering, and regulatory review.



Joshua Falls to Yeat

765kV Electric Transmission Line Project

765kV Self-Supporting Delta



175' Tall
on average



200' Right-of-Way

This image represents a typical structure for the project.
Final design is subject to change pending public,
engineering, and regulatory review.



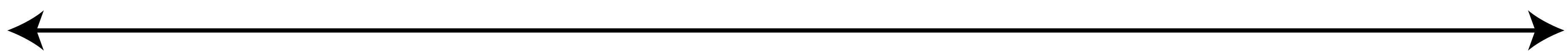
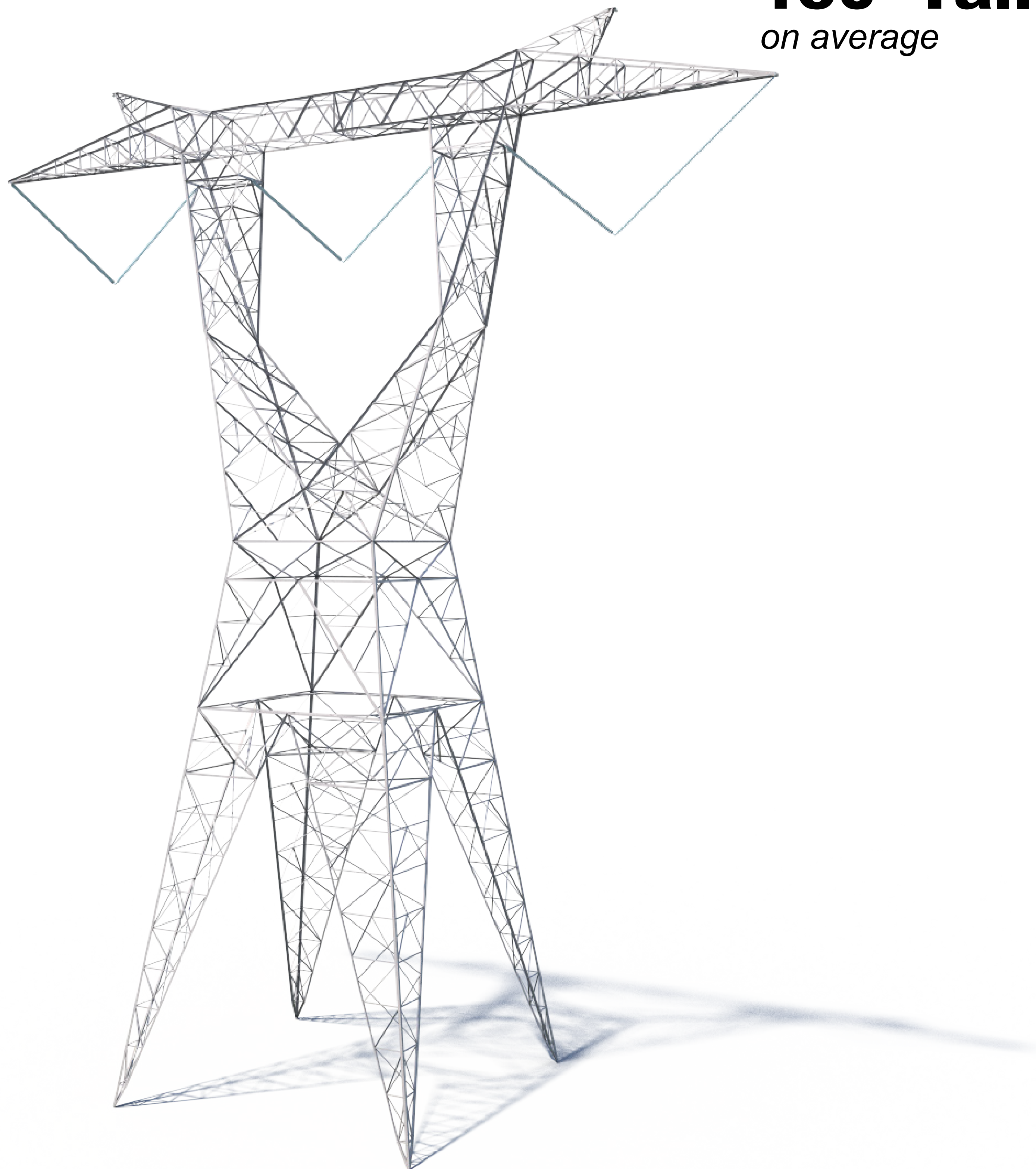
Joshua Falls to Yeat

765kV Electric Transmission Line Project

765kV Self-Supporting Horizontal

150' Tall

on average



200' Right-of-Way

This image represents a typical structure for the project.
Final design is subject to change pending public,
engineering, and regulatory review.



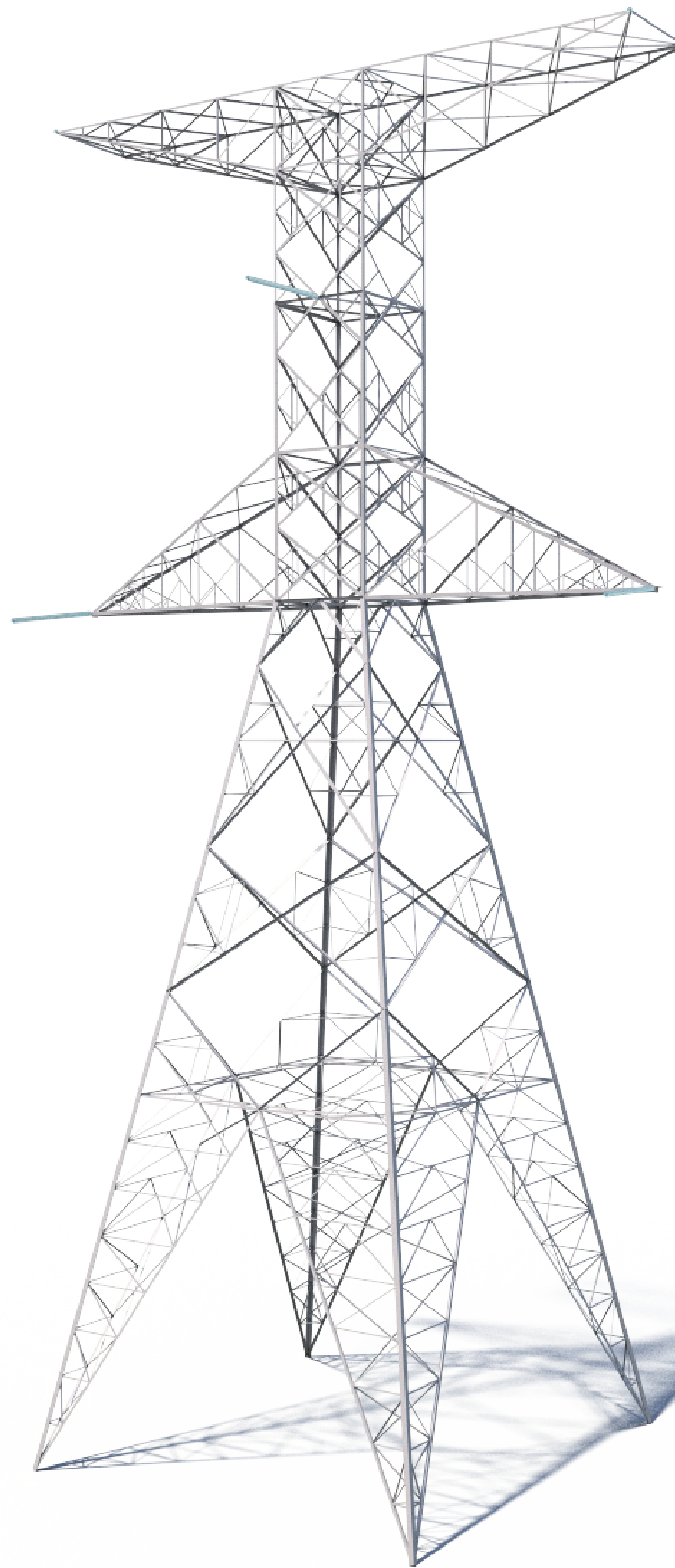
Joshua Falls to Yeat

765kV Electric Transmission Line Project

765kV Self-Supporting Delta Dead End

170' Tall

on average



200' Right-of-Way

This image represents a typical structure for the project.
Final design is subject to change pending public,
engineering, and regulatory review.