



We're glad you're here!

Please:

- Engage respectfully
- Listen and share openly
- Share your feedback with project team members

Routes are not final

A JOINT VENTURE OF



Dominion
Energy®

FirstEnergy™
Transmission

WHY VIRGINIA NEEDS THIS LINE

PJM Interconnection independently plans the electric grid for 13 states, including all of Virginia. Its 2024 reliability study found the system cannot meet the demand that is coming.

<p>15 GW</p> <p>of new demand by 2032, the output of about 15 large power plants</p>	<p>1,000+</p> <p>reliability violations found: 173 overloaded lines, 834 low-voltage locations</p>	<p>94</p> <p>competing proposals evaluated before this solution was chosen</p>	<p>2029</p> <p>the year the problems begin arriving</p>
---	---	---	--

Demand is growing all across Virginia

Homes, farms, businesses, industry, and new technology are adding demand statewide while more than 2,000 megawatts of older power plants retire. The existing wires cannot carry the difference.

The strain is already measurable

PJM found overloads and low-voltage problems at every voltage level, from local 69 kV lines to the largest interstate lines, across eight utility territories. Low voltage means brownouts, damaged equipment, and outages that spread.

A stronger backbone means fewer and shorter outages here

This line ties central Virginia and the Appalachian Power region into the strongest part of the interstate grid. When storms or equipment failures strike, power reroutes instead of going out. It gives localities the confidence that local businesses can continue to grow as planned, while giving communities the capacity to attract jobs and expand economic opportunities for everyone.

There is no smaller fix

PJM evaluated 94 proposals from 16 companies and found that the 765 kV option significantly outperformed the alternatives. Smaller lines would require nearly the same amount of land while carrying far less electricity.

The 765 kV solution is also the most cost-effective option. A single 765 kV line can deliver roughly the same capacity as three 500 kV lines. By building right-sized infrastructure from the start, consumers avoid paying for multiple rounds of construction and future upgrades. Simply put, building one 765 kV line today costs less than building smaller lines now and larger ones later.

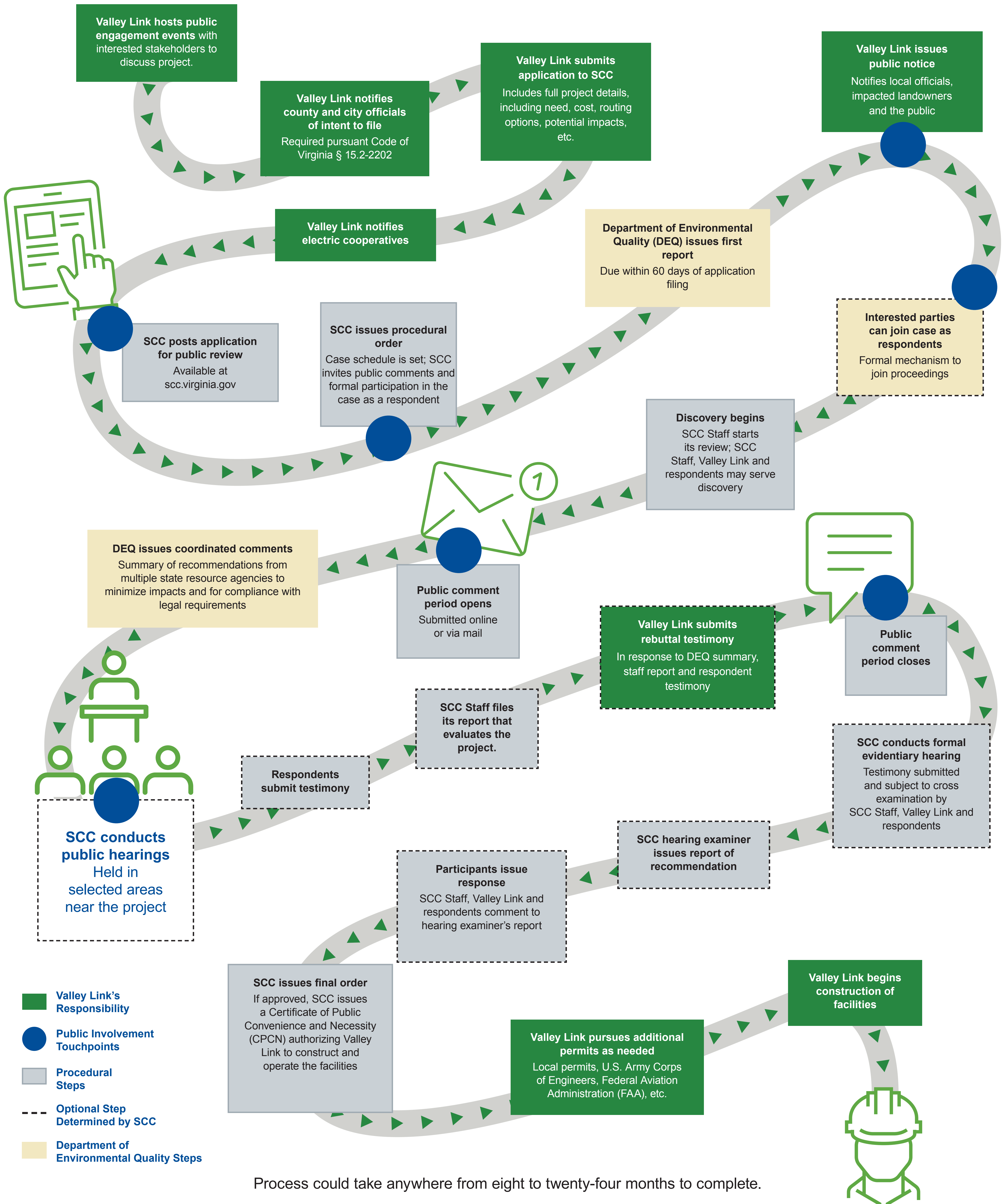
<p>Without new transmission</p> <p>Overloaded lines taken out of service on hot and cold days. Brownouts, wider and longer outages and impacts felt throughout the system. Aging equipment with repairs measured in months. Growth turned away for lack of power.</p>	<p>With this line</p> <p>A reinforced backbone built once, with fewer total miles than any combination of smaller projects. Power that reroutes around failures. Capacity for Virginia communities to keep growing.</p>
--	--

A JOINT VENTURE OF

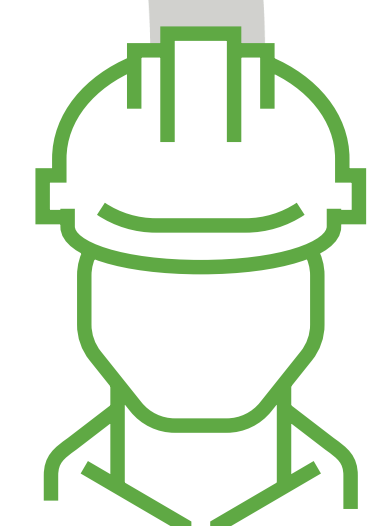
Electric Transmission Line SCC Application Process



The Virginia State Corporation Commission (SCC) has regulatory authority over all energy providers in Virginia and requires certification for all transmission lines out of the ordinary course of doing business, as well as transmission lines that are at or above 138 kilovolts (kV). Among other responsibilities, the SCC validates the need for a proposed line and ultimately approves the route and structures. In reviewing a proposed project, the SCC must consider whether potential impacts on scenic assets, historic districts and the environment have been reasonably minimized.



Process could take anywhere from eight to twenty-four months to complete.





WHAT IS VALLEY LINK?

Valley Link is a partnership between Dominion Energy, Transource (jointly owned by American Electric Power and Evergy) and FirstEnergy Transmission working to strengthen Virginia's power grid.



Valley Link's mission is to build infrastructure that keeps the lights on and powers the future, all while keeping bills as low as possible.



PROJECT OVERVIEW

The Joshua Falls-Yeat Project is designed to help meet the region's growing demand for electricity.

The project proposes an approximately 115-mile, 765 kilovolt transmission line.



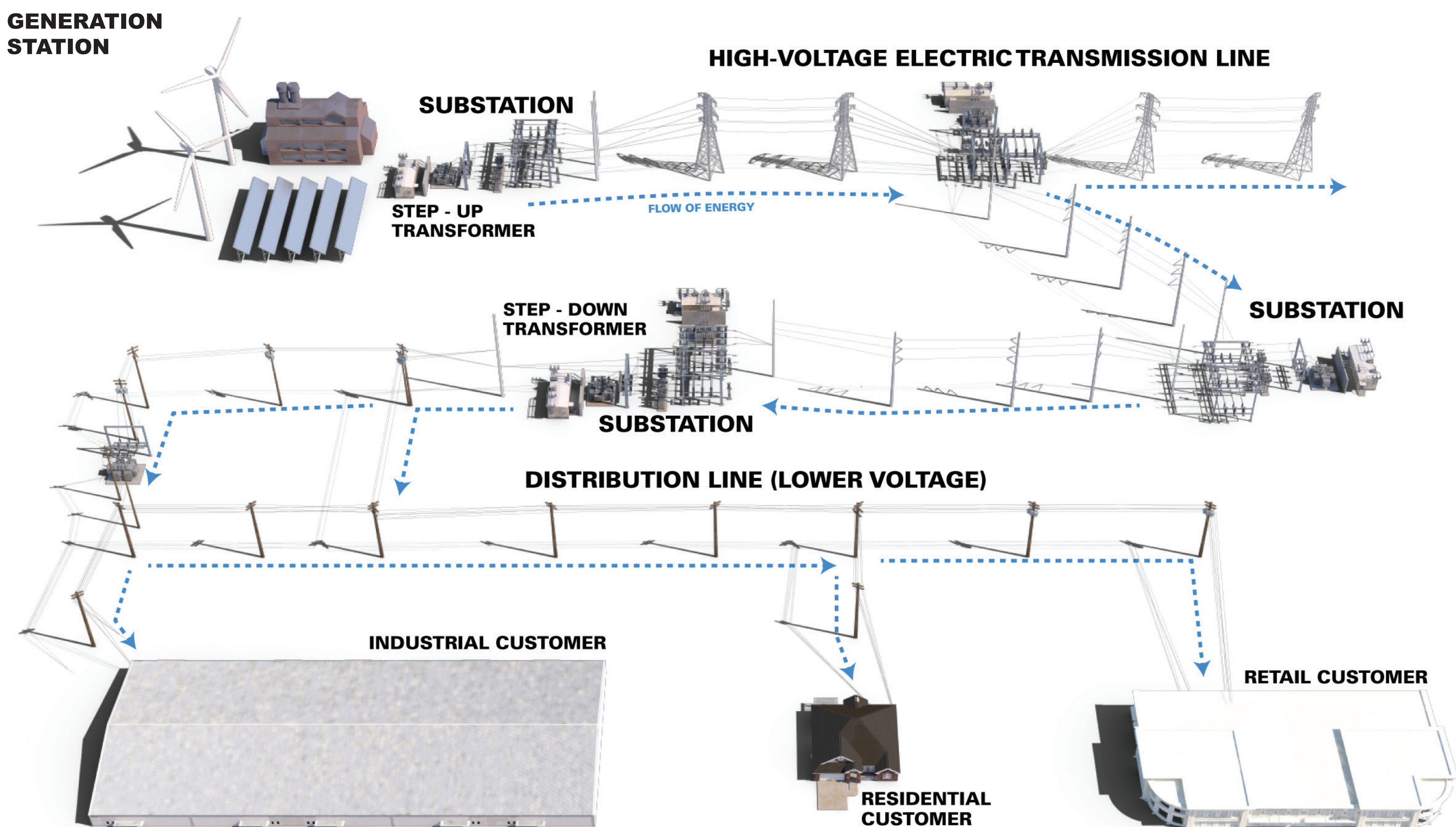
The project is in the early stages of development. Valley Link is studying potential routes.



Input from landowners and community members is an important part of this process.

ENERGY GRID

Transmission lines move energy from power stations to substations where voltage is adjusted before it's delivered to homes and businesses.





ELECTRIC AND MAGNETIC FIELDS

Thousands of scientific studies have investigated EMF exposure. No organization has found conclusive evidence that EMF causes long-term adverse health effects.



Learn more ▶





ENVIRONMENTAL PROTECTION

Valley Link is coordinating with local, state and federal agencies throughout both the SCC and permitting processes. Touchpoints with agencies and localities include:

- Pre-application coordination
- Environmental resource surveys
- Evaluation of survey results
- Permitting impacts to natural resources
- Mitigating for unavoidable impacts
- Site inspections during construction and prior to permit termination

Construction activities and best management practices:

- **Vegetation management:** Removal activities are conducted to avoid disturbance in wetlands and within 100 feet of streams; vegetation debris will not be left in wetlands and streams.
- **Land disturbance:** All land disturbing activities are permitted through Virginia Department of Environmental Quality, in compliance with the Virginia Erosion and Stormwater Management Regulations, and in accordance with agency-approved Standards and Specifications.
- **Timber matting:** Construction activities are conducted on top of timber mats in order to protect existing environmental resources.



ENVIRONMENTAL PROTECTION

We aim to build transmission lines that power communities and the economy while minimizing community and environmental impacts.

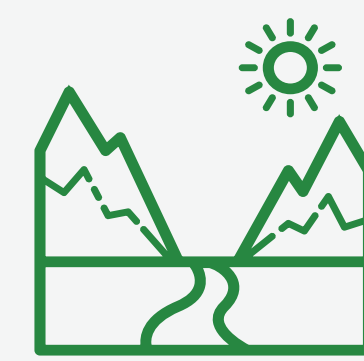
Our project teams review a variety of environmental factors including:



Current and proposed public and private land uses



Aesthetics and visual impacts



Water quality, including potential impacts on wetlands, streams and water bodies



Wildlife, vegetation and fisheries, including threatened and endangered species



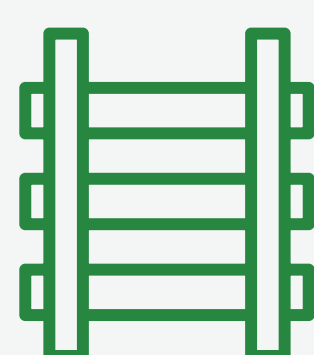
Soils, topography and geology



Community and neighborhood growth and development



Historic and archaeological sites



Existing infrastructure, such as power lines, roads, railroads, pipelines and renewables



Environmental & Social Justice Impacts

We identify and comply with all required local, state and federal regulations.



CONSTRUCTION ACCESS

Valley Link will use existing roads where possible and coordinate with property owners when additional access is needed.





RIGHT OF WAY

Maintaining a clear right of way is essential for safe and reliable service. Easements allow for construction and maintenance activities.





VEGETATION MANAGEMENT

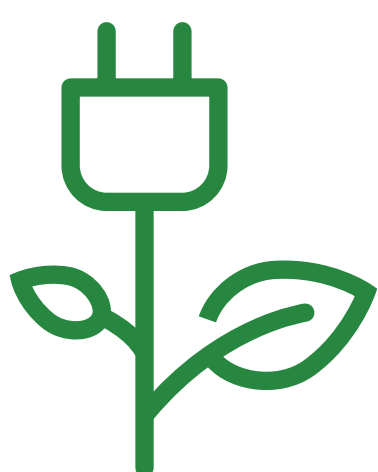
WHAT IS VEGETATION MANAGEMENT?

Valley Link's vegetation management will control the growth of trees and other vegetation in transmission rights of way.

WHY IS IT DONE?

To reduce power outages caused by trees and other plants contacting power lines.

OUR VEGETATION MANAGEMENT PROGRAM AIMS TO:



Protect the electric grid and reduce power outages



Comply with federal, state and local regulations



Minimize negative impacts to the environment

The North American Electric Reliability Corporation (NERC) sets standards that require utilities to establish minimum clearance distances between transmission lines and the nearest vegetation to prevent power outages.

- Crews may clear identified danger trees outside the right of way as allowed per easement language.
- When possible, crews use selective clearing practices to retain low-growth shrubs and bushes.
- Landowners should speak with a company representative to identify plants that are safe to place in the right of way.



WE WANT TO HEAR FROM YOU!

Use your smartphone camera to scan the QR code to visit the Joshua Falls-Yeat **GeoVoice**, where you can:

- Explore the proposed project.
- View proposed structure information and simulated photography.
- Communicate directly with our team about any questions or concerns.



CONTACT THE VALLEY LINK TEAM:

www.vltransmission.com

(855) 617-6107

JF2Y@vltransmission.com



**Thank you for
attending!**

Scan the QR code to
learn more!



www.vltransmission.com