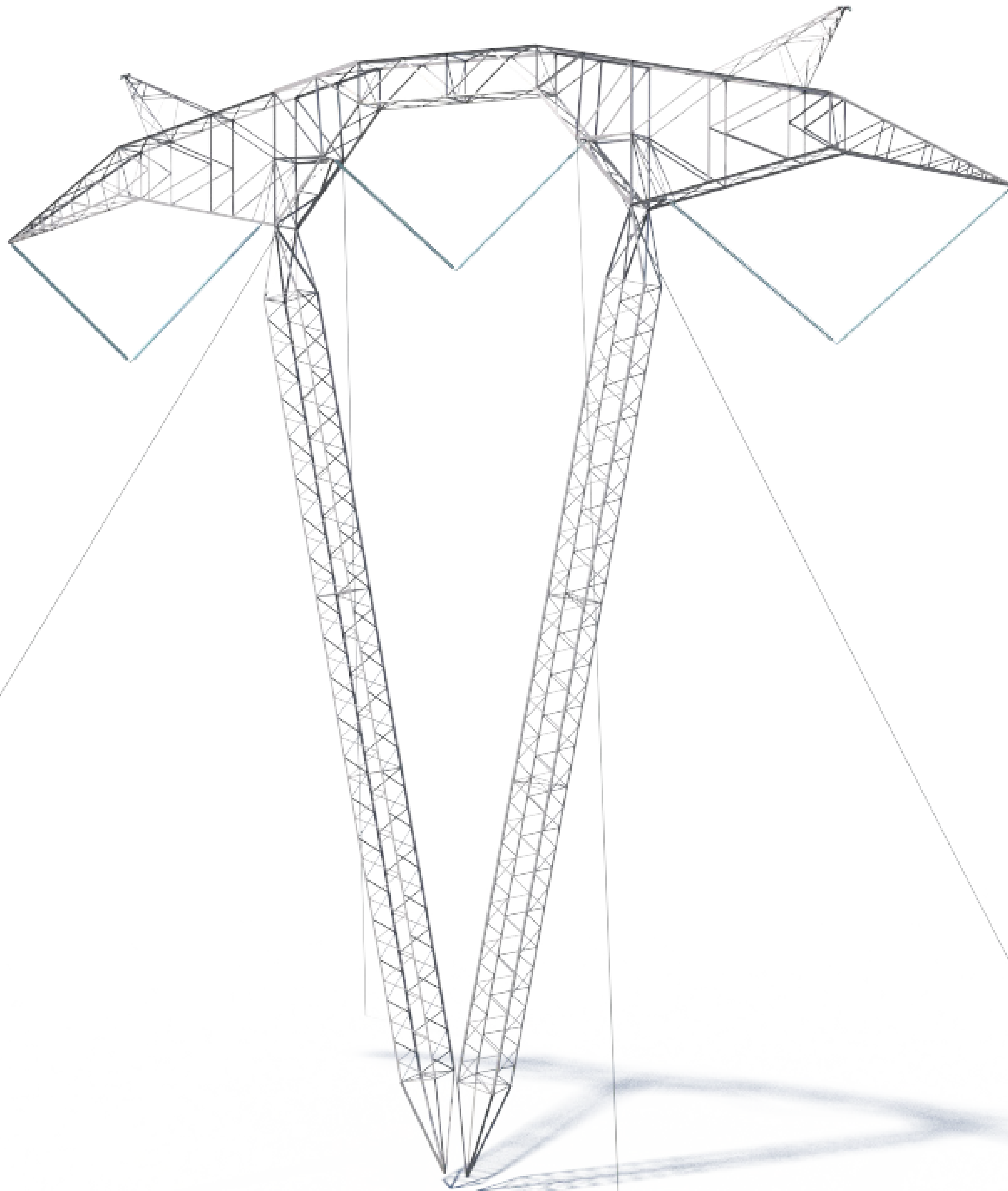




Valley North Project

765kV Guyed Vee

150' Tall
on average



200' Right-of-Way
on average

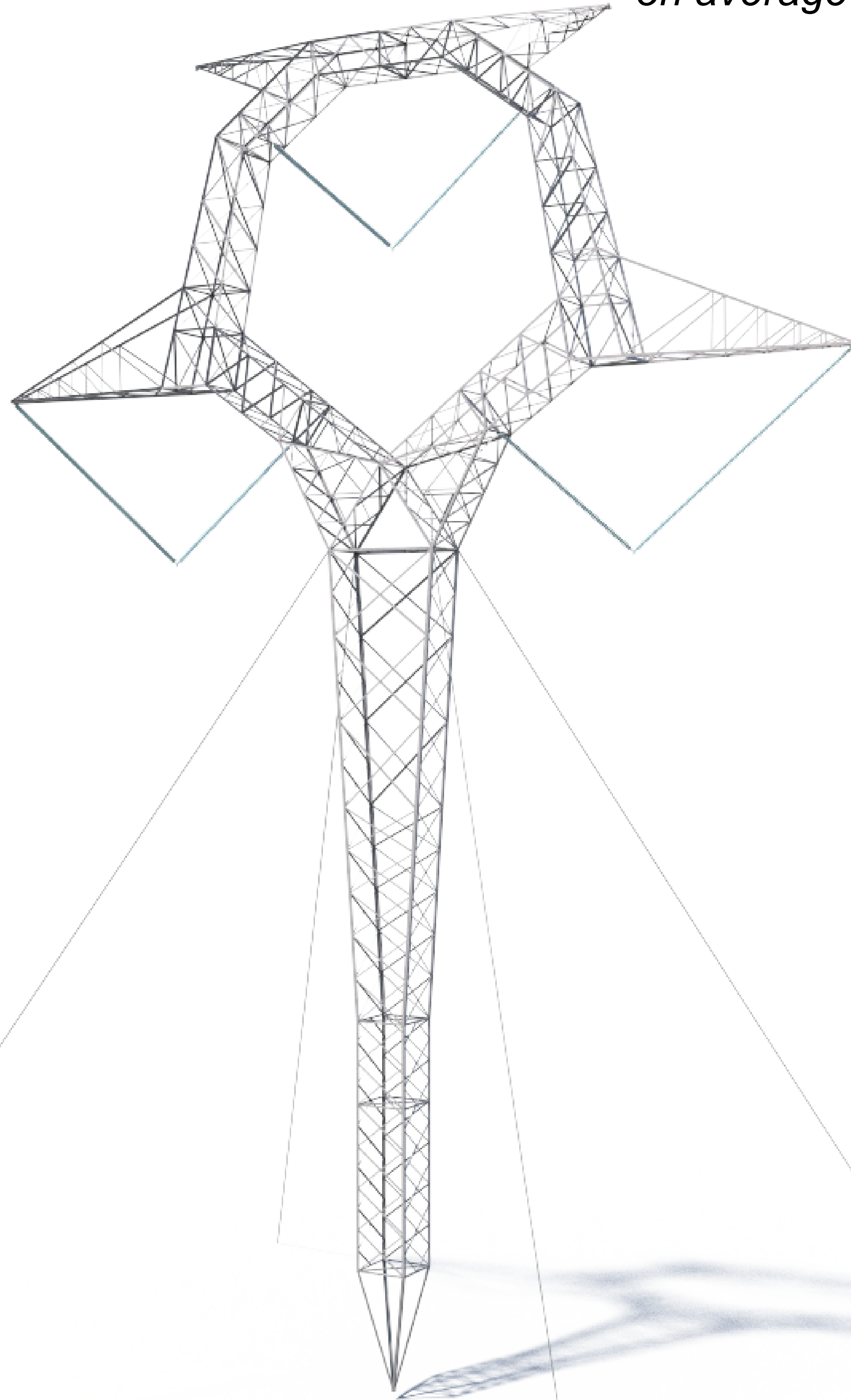
This image represents a typical structure for the project.
Final design is subject to change pending public,
engineering, and regulatory review.



Valley North Project

765kV Guyed Y

175' Tall
on average



200' Right-of-Way
on average

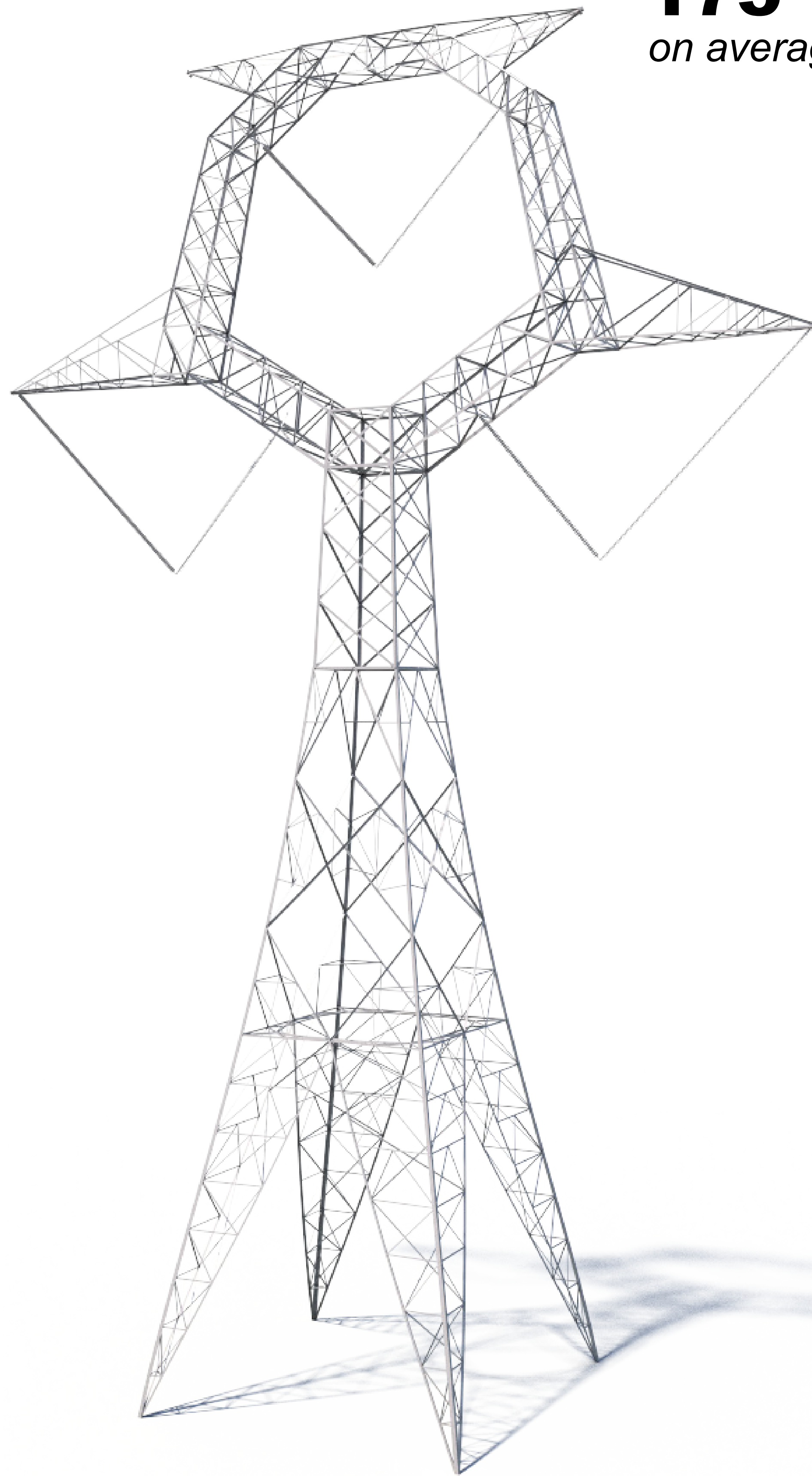
This image represents a typical structure for the project.
Final design is subject to change pending public,
engineering, and regulatory review.



Valley North Project

765kV Self-Supporting Delta

175' Tall
on average



200' Right-of-Way
on average

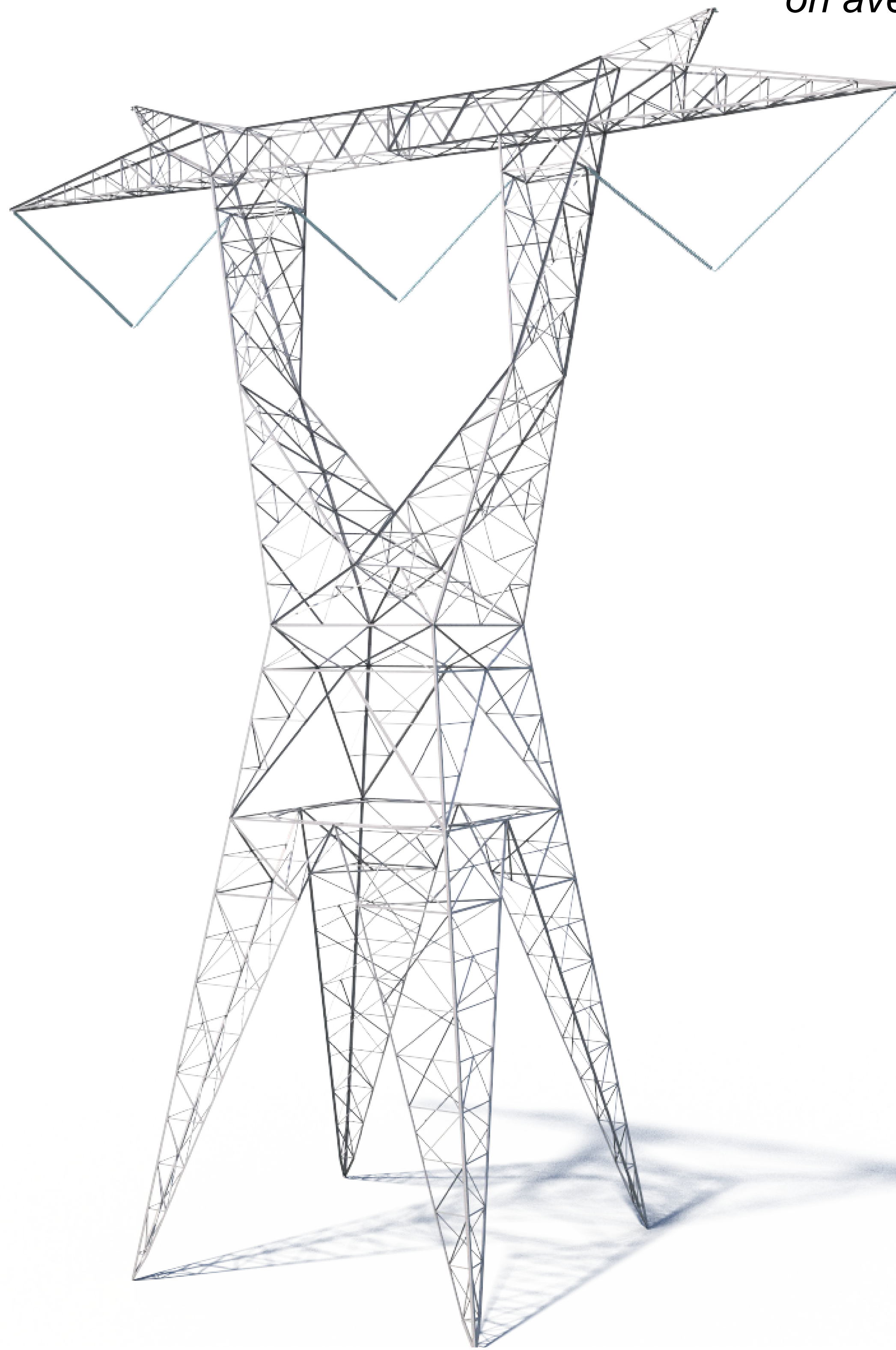
This image represents a typical structure for the project.
Final design is subject to change pending public,
engineering, and regulatory review.



Valley North Project

765kV Self-Supporting Horizontal

150' Tall
on average



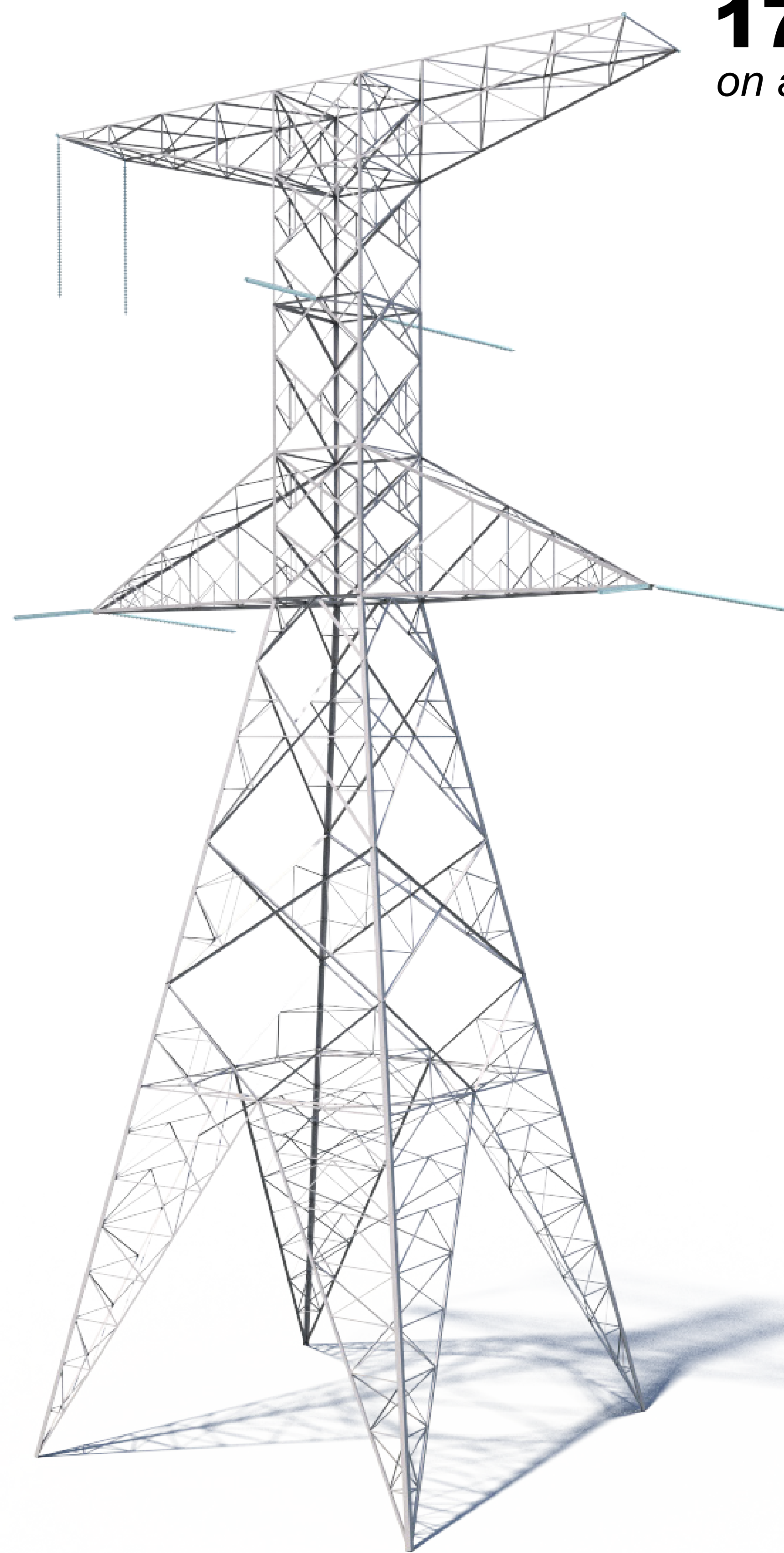
200' Right-of-Way
on average

This image represents a typical structure for the project.
Final design is subject to change pending public,
engineering, and regulatory review.

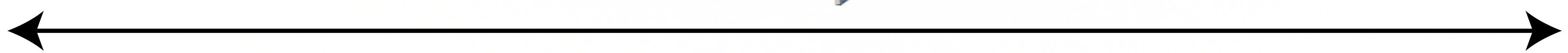


Valley North Project

765kV Self-Supporting Delta Dead End



170' Tall
on average



200' Right-of-Way
on average

This image represents a typical structure for the project.
Final design is subject to change pending public,
engineering, and regulatory review.