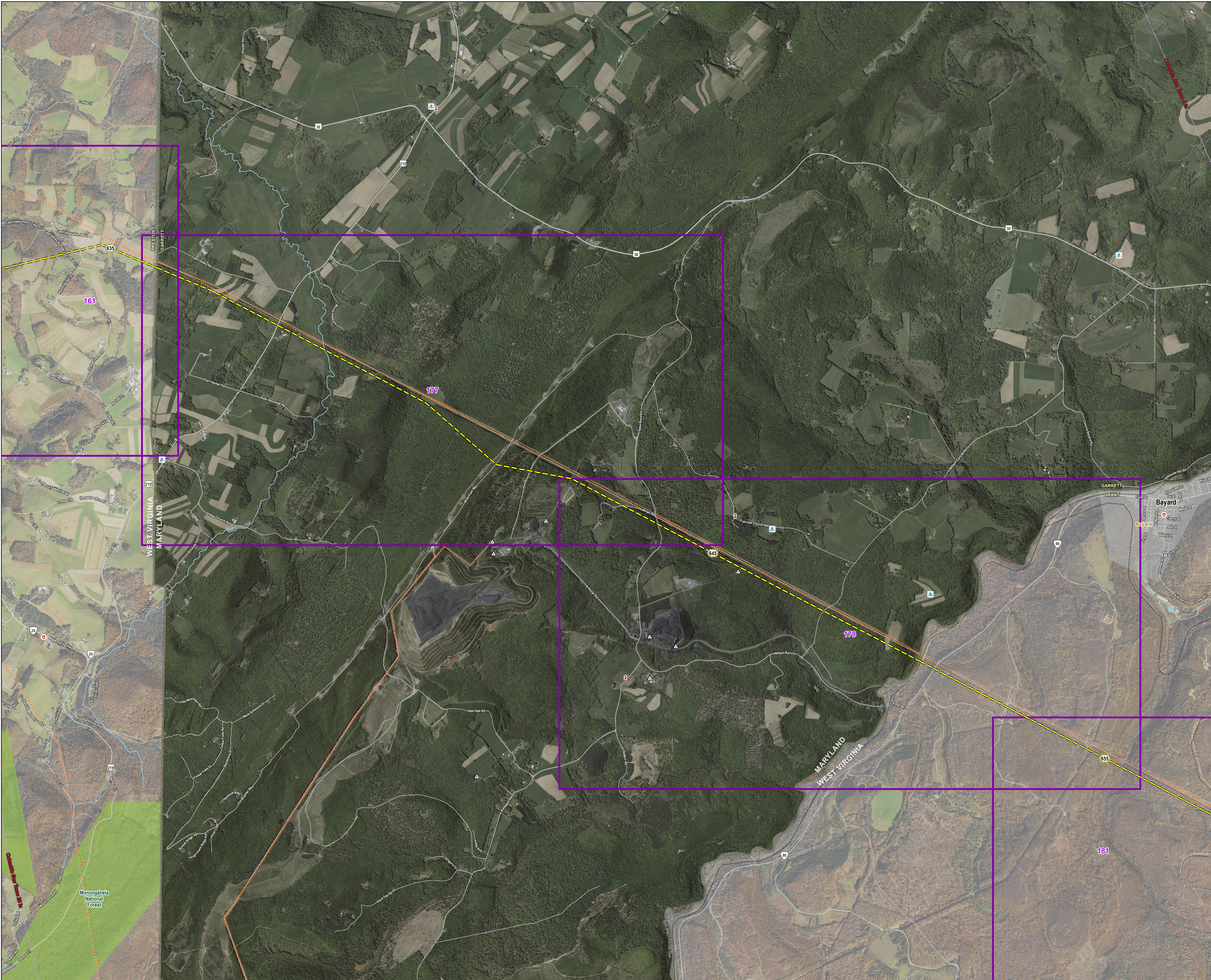
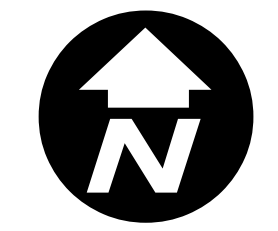
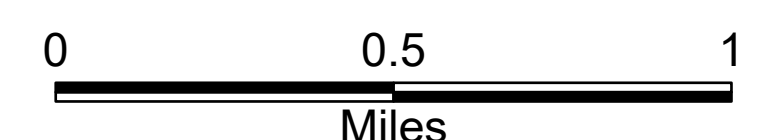
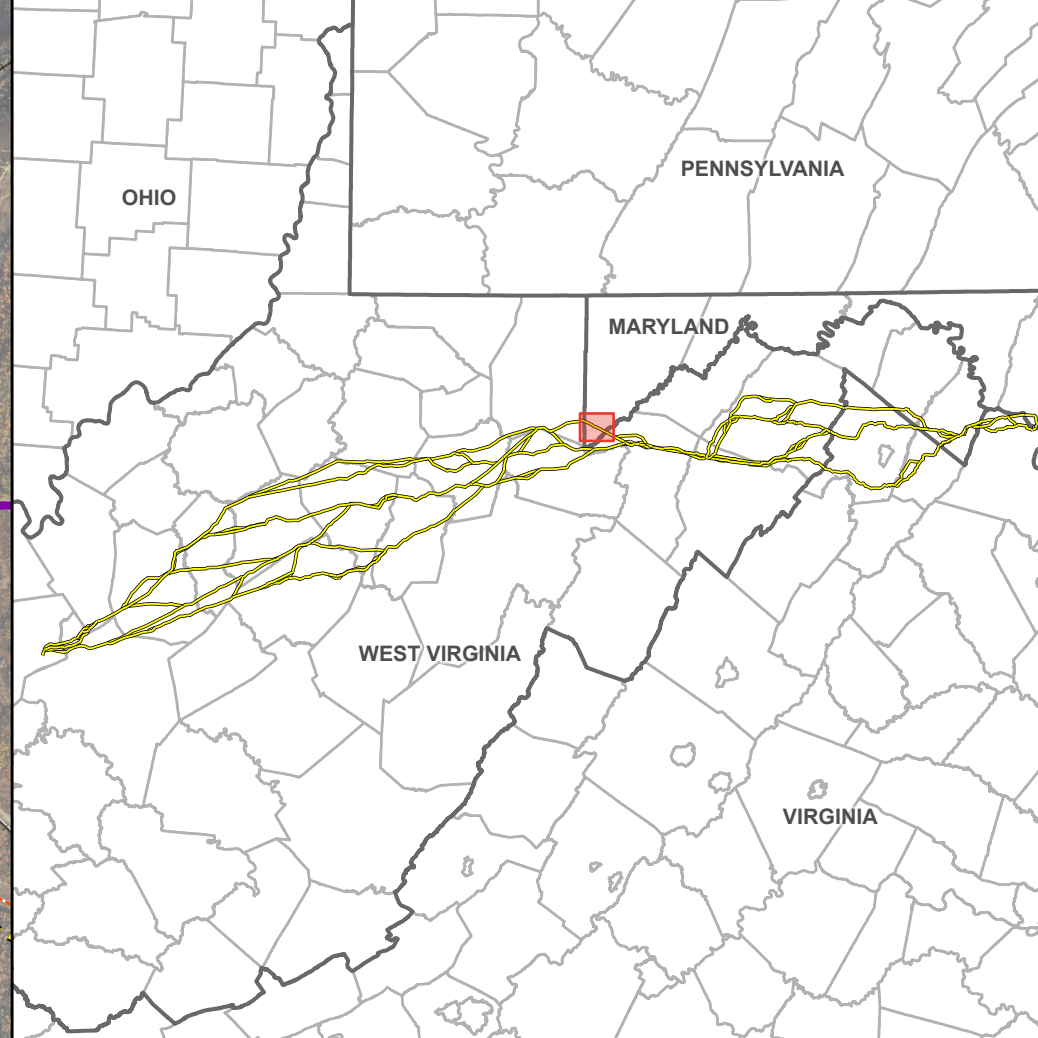


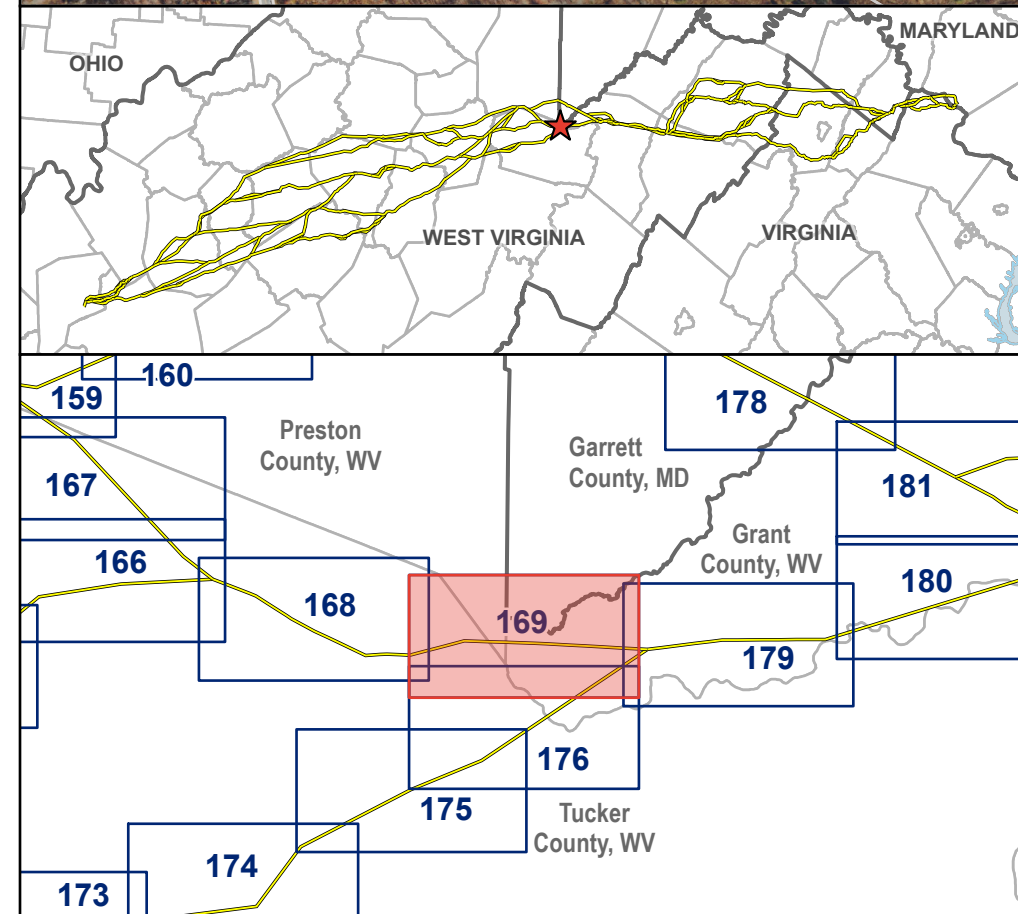
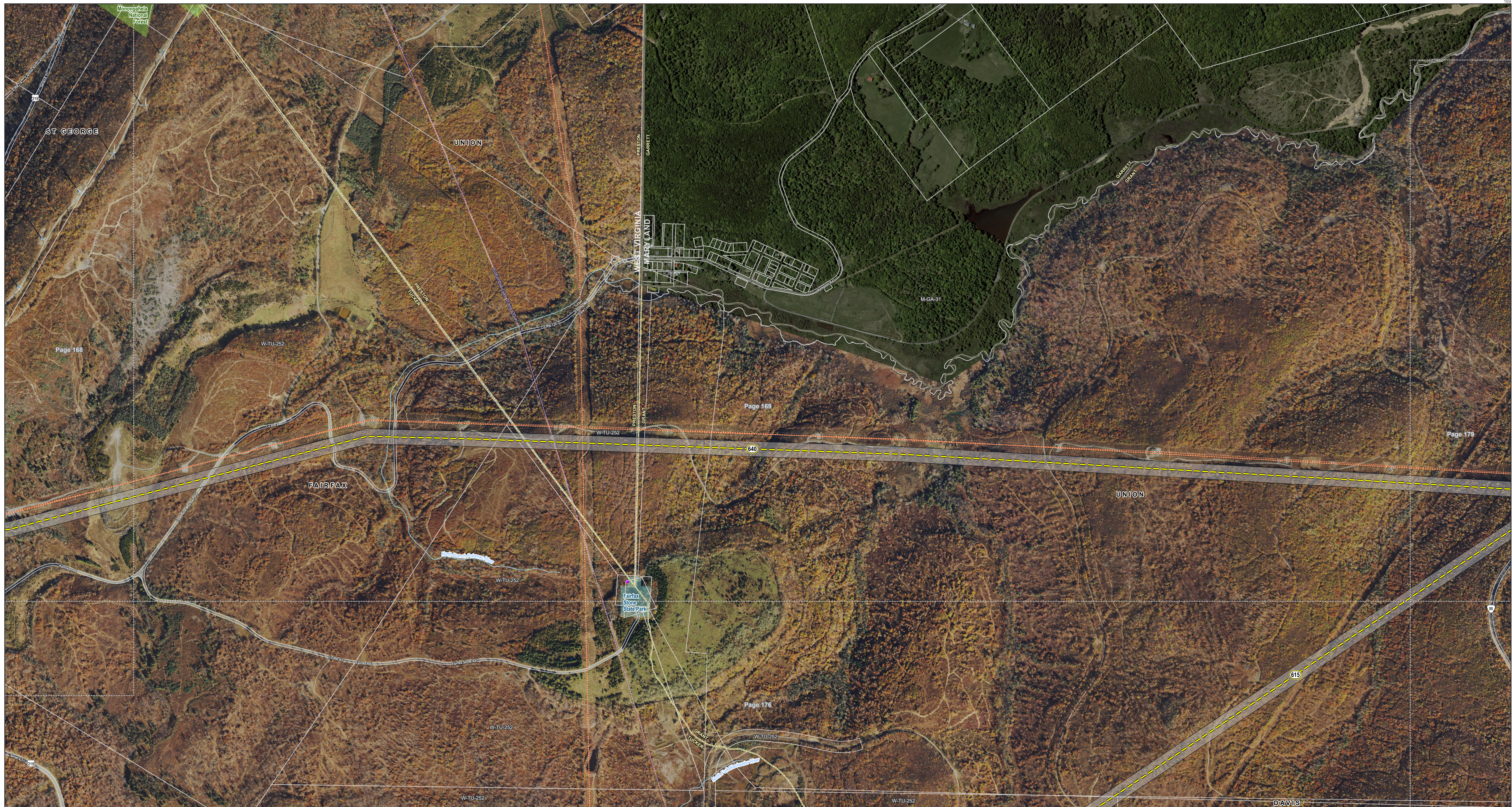
County Overview
Garrett County, MD



- Study Segment
- Study Segment Label
- Aerial Map Book Index
- + Place of Worship
- + Cemetery
- + Fire Station / EMS Station
- △ Existing Substation
- Existing Transmission Line
- Pipeline
- ~ River
- State Boundary
- County Boundary
- Town or Municipal Boundary
- National Forest Service
- Agricultural Easement or Forestal District

Study segments and rights-of-way shown are preliminary and for discussion purposes only. Study segments and rights-of-way are subject to change based on landowner input, engineering, ground surveys, and studies.



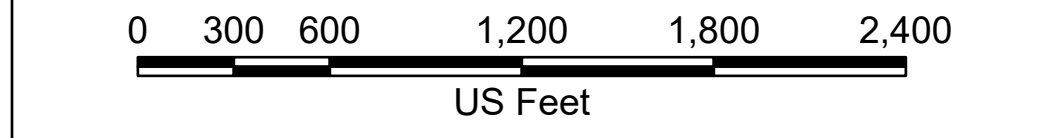


- Study Segment
- Study Segment Label
- Typical 200 ft Right-of-Way*
- Existing Transmission Line
- Pipeline
- ~ River
- State Boundary
- County Boundary
- Parcel Boundary
- National Forest Service
- State Park, Recreation, or Conservation Area
- NRHP Point
- Page Boundary

*Typical right-of-way is subject to change
 Study segments and rights-of-way shown are preliminary and for discussion purposes only. Study segments and rights-of-way are subject to change based on landowner input, engineering, ground surveys, and studies.

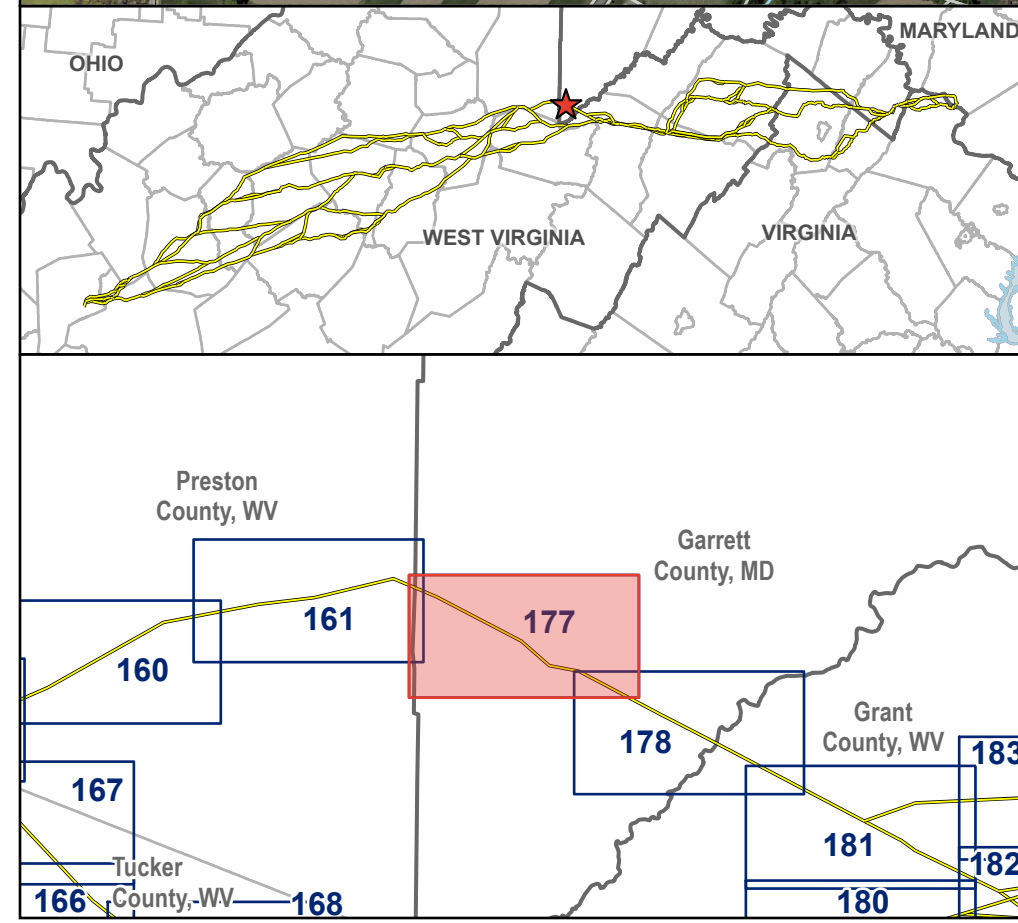
DAVIS
 VALLEY LINK TRANSMISSION COMPANY, LLC
VALLEY NORTH PROJECT

Aerial Map Book
 Tucker, Preston, and Grant Counties,
 West Virginia



Page 169 of 263
 June 2026



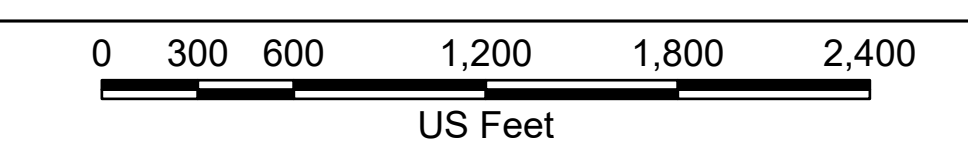


- Study Segment
- 177 Study Segment Label
- Typical 200 ft Right-of-Way*
- ▲ Existing Substation
- Existing Transmission Line
- River
- State Boundary
- County Boundary
- + Cemetery
- * Gas Well
- Parcel Boundary
- Page Boundary

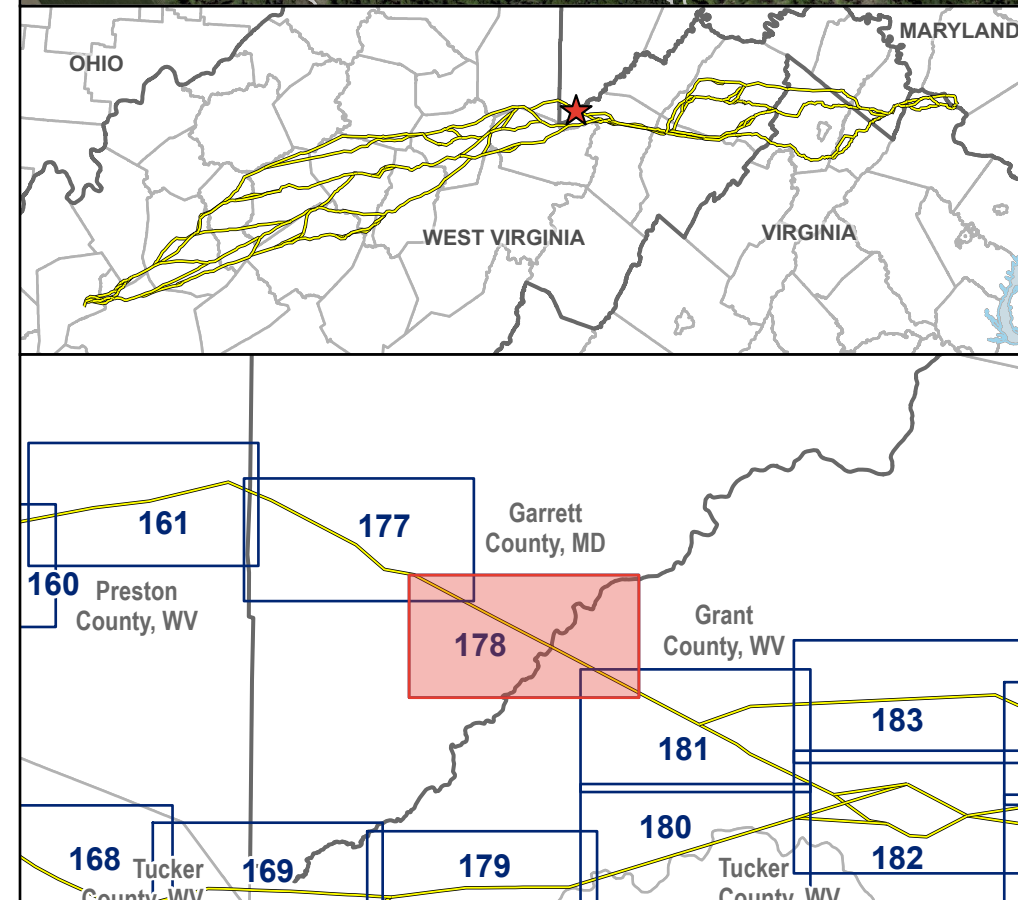
*Typical right-of-way is subject to change
 Study segments and rights-of-way shown are preliminary and for discussion purposes only. Study segments and rights-of-way are subject to change based on landowner input, engineering, ground surveys, and studies.

VALLEY LINK TRANSMISSION COMPANY, LLC
VALLEY NORTH PROJECT

Aerial Map Book
 Preston and Garrett Counties,
 West Virginia and Maryland



Path: \\corp.pbwan.net\US-CentralData\DCAME20\new_gal\Projects\258751_VLT_Arma_Wellon_Spring_Rocky_Point\Apps\VLT_Public_Meetings_Rd_1\VLT_Public_Meetings_Rd_1.aprx

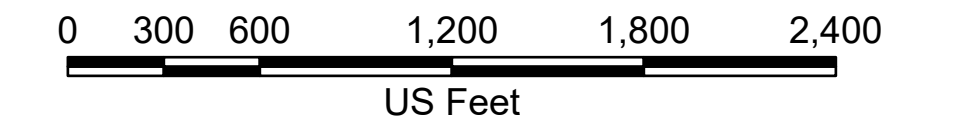


- Study Segment
- 178 Study Segment Label
- Typical 200 ft Right-of-Way*
- Railroad
- Existing Substation
- Existing Transmission Line
- ~ River
- State Boundary
- County Boundary
- Town or Municipal Boundary
- + Cemetery
- + Place of Worship
- Parcel Boundary
- Page Boundary

*Typical right-of-way is subject to change
Study segments and rights-of-way shown are preliminary and for discussion purposes only. Study segments and rights-of-way are subject to change based on landowner input, engineering, ground surveys, and studies.

VALLEY LINK TRANSMISSION COMPANY, LLC
VALLEY NORTH PROJECT

Aerial Map Book
Garrett and Grant Counties,
Maryland and West Virginia



Page 178 of 263

June 2026

Path: \\corp.pdw.com\net\US-CentralData\DCAME20\new_gis\Projects\258751_VLT_Arma_Wellon_Spring_Rocky_Point\apps\VT_Public_Meetings_Rd_1\VT_Public_Meetings_Rd_1.aprx