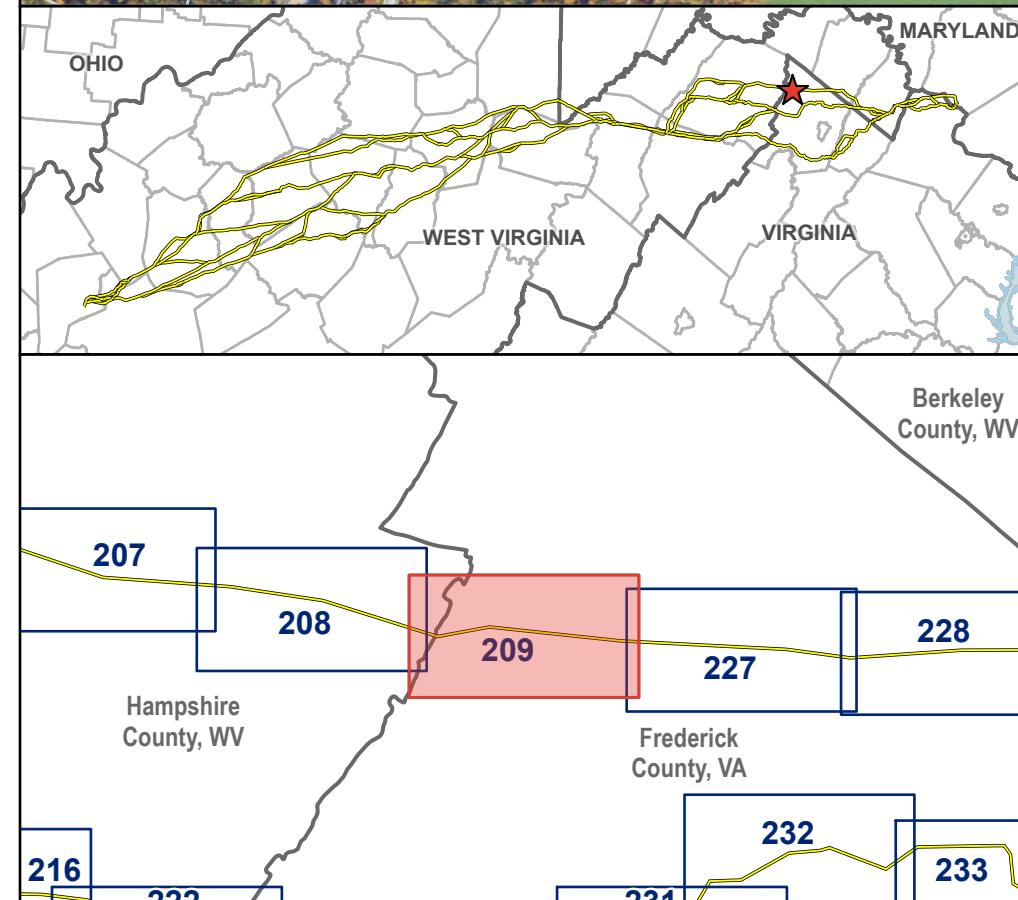


<ul style="list-style-type: none"> --- Study Segment ○ Study Segment Label Aerial Map Book Index 	<ul style="list-style-type: none"> Public Airport Private Airport Existing Substation Existing Transmission Line Pipeline River State Boundary County Boundary Town or Municipal Boundary 	<ul style="list-style-type: none"> National Forest Service National Park Service State Park, Recreation, or Conservation Area Local Park or Recreation Area Private Conservation or Reserve Other Protected Lands 	<ul style="list-style-type: none"> VOF Conservation Easement Conservation Easement Agricultural Easement or Forestal District 		<p style="text-align: center;">VALLEY LINK TRANSMISSION COMPANY, LLC VALLEY NORTH PROJECT County Overview Frederick County, VA</p> <p style="text-align: center;">0 0.5 1 2 3 Miles</p> <p style="text-align: center;"> </p> <p style="text-align: right;">June 2026</p>
---	---	---	---	--	---

Study segments and rights-of-way shown are preliminary and for discussion purposes only. Study segments and rights-of-way are subject to change based on landowner input, engineering, ground surveys, and studies.

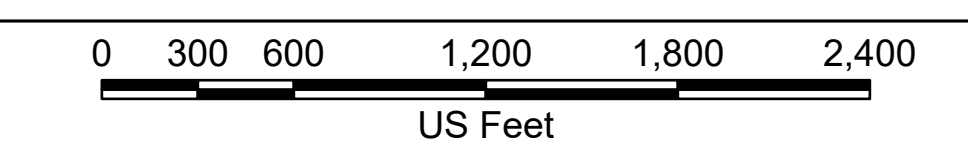


- Study Segment
- Study Segment Label
- Typical 200 ft Right-of-Way*
- Existing Transmission Line
- State Boundary
- County Boundary
- + Cemetery
- + Place of Worship
- Parcel Boundary
- Page Boundary

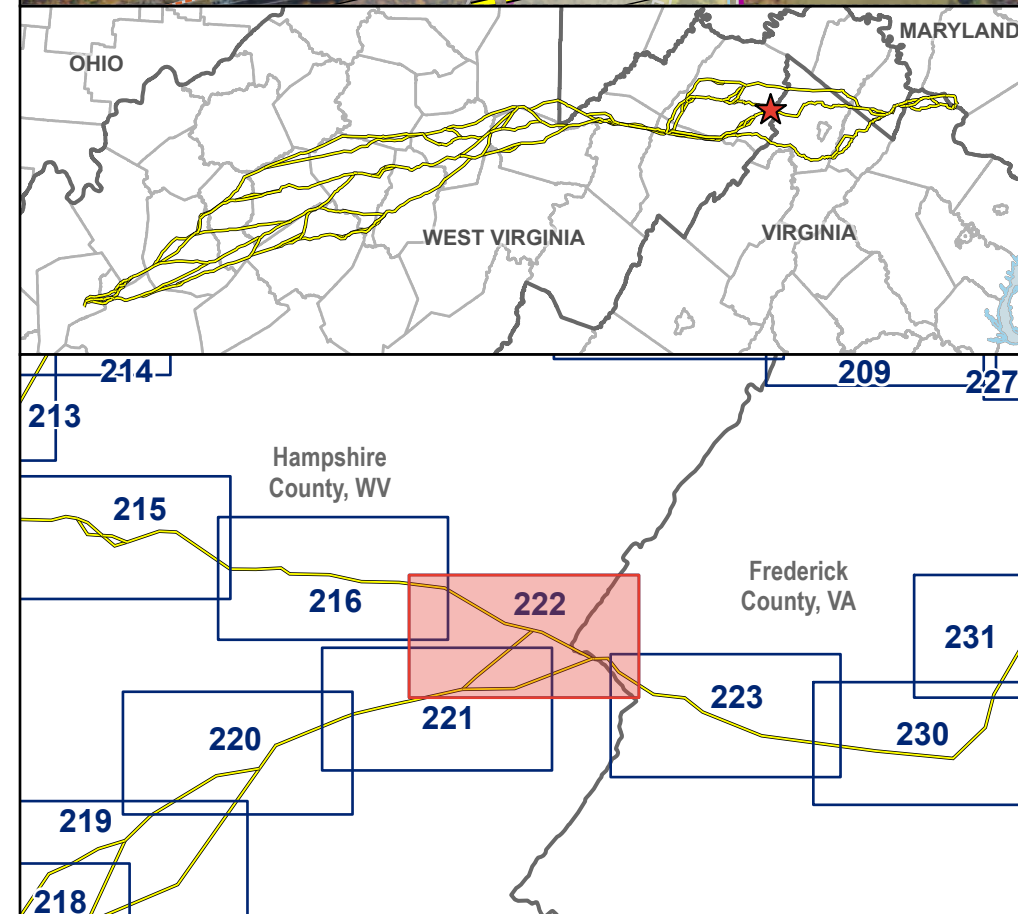
*Typical right-of-way is subject to change
 Study segments and rights-of-way shown are preliminary and for discussion purposes only. Study segments and rights-of-way are subject to change based on landowner input, engineering, ground surveys, and studies.

VALLEY LINK TRANSMISSION COMPANY, LLC
VALLEY NORTH PROJECT

Aerial Map Book
 Hampshire and Frederick Counties,
 West Virginia and Virginia



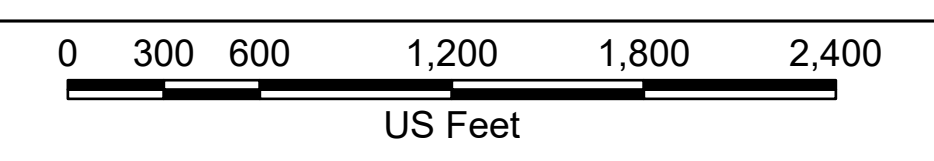
Path: \\corp.pbwan.net\US-CentralData\DCAME20\new_gal\Projects\258751_VLT_Armas_Wellton_Spring_Rocky_Point\apps\VLT_Public_Meetings_Rd_1\VLT_Public_Meetings_Rd_1.aprx



- Study Segment
 - Study Segment Label
 - Typical 200 ft Right-of-Way*
 - Existing Transmission Line
 - River
 - State Boundary
 - County Boundary
 - + Cemetery
 - + Place of Worship
 - Parcel Boundary
 - Agricultural Easement or Forestal District
 - NRHP Point
 - NRHP Polygon
 - Page Boundary
- *Typical right-of-way is subject to change
 Study segments and rights-of-way shown are preliminary and for discussion purposes only. Study segments and rights-of-way are subject to change based on landowner input, engineering, ground surveys, and studies.

VALLEY LINK TRANSMISSION COMPANY, LLC
VALLEY NORTH PROJECT

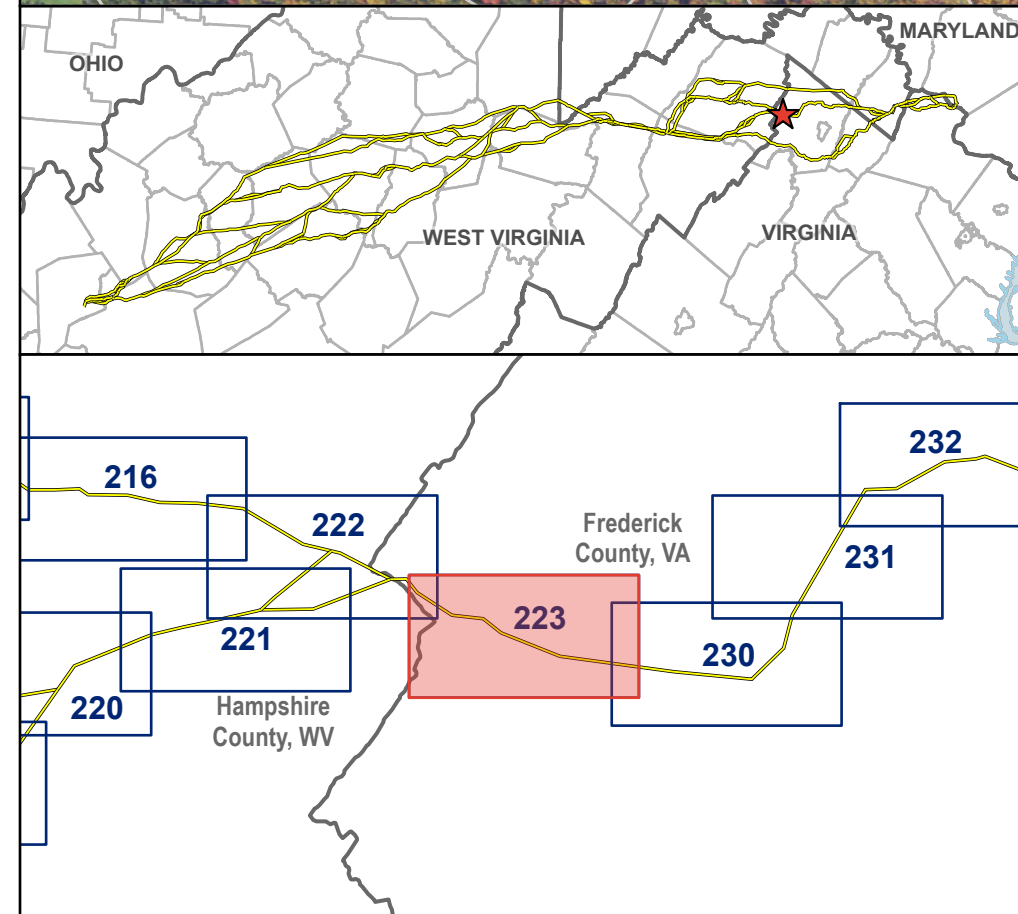
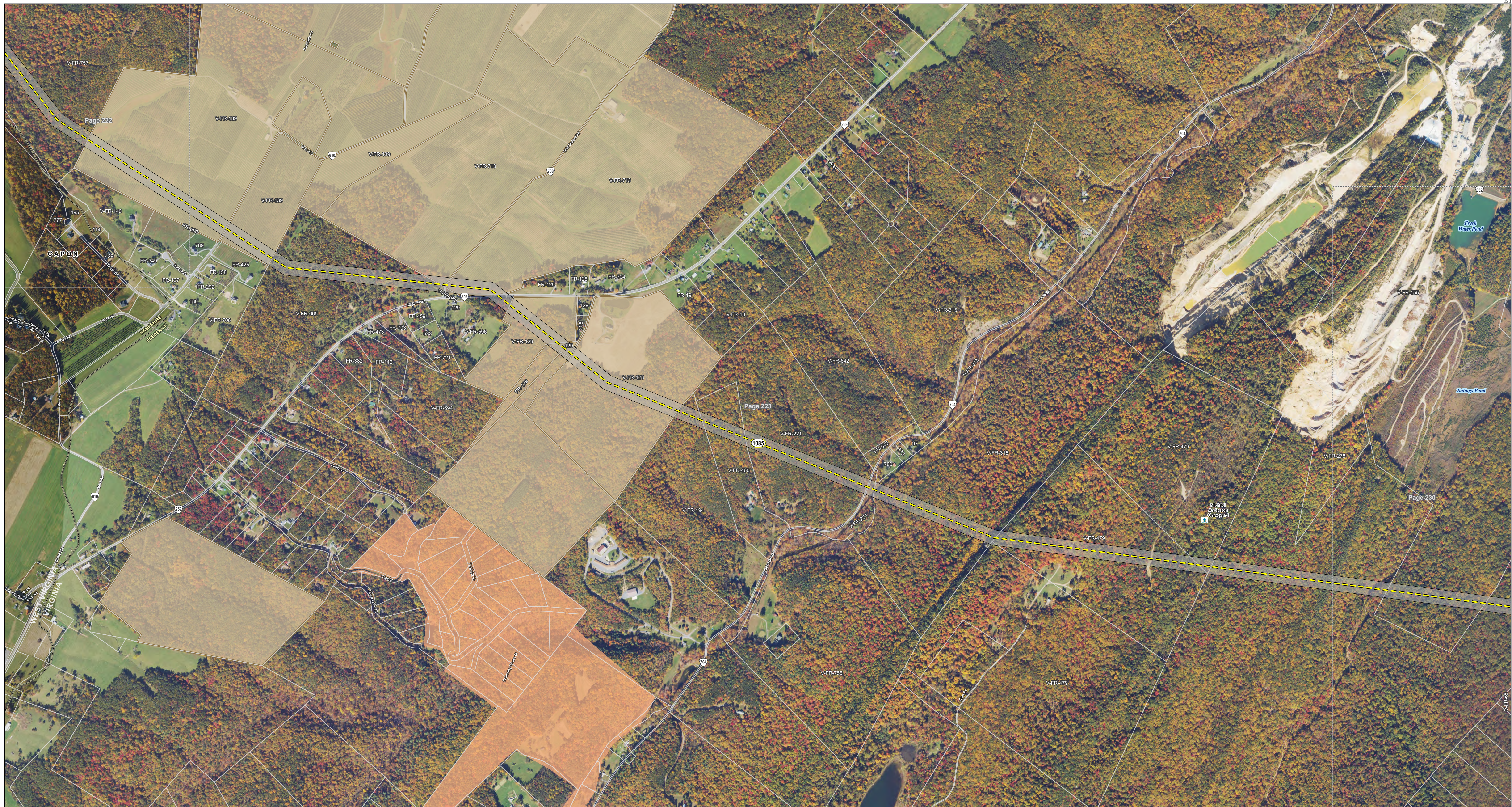
Aerial Map Book
 Hampshire and Frederick Counties,
 West Virginia and Virginia



Page 222 of 263

June 2026

Path: \\corp.pbwan.net\US-CentralData\DCAME20\new_gal\Projects\258751_VLT_Arma_Wellon_Spring_Rocky_Point\apps\VLT_Public_Meetings_Rd_1\VLT_Public_Meetings_Rd_1.aprx

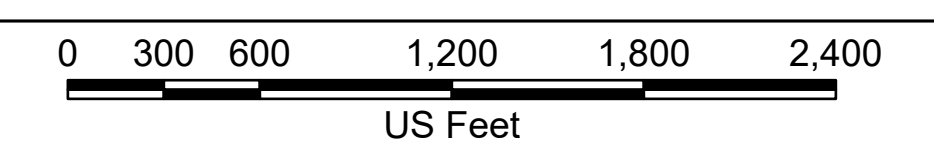


- Study Segment
- Study Segment Label
- Typical 200 ft Right-of-Way*
- Existing Transmission Line
- State Boundary
- County Boundary
- Cemetery
- Parcel Boundary
- Conservation Easement
- Agricultural Easement or Forestal District
- Page Boundary

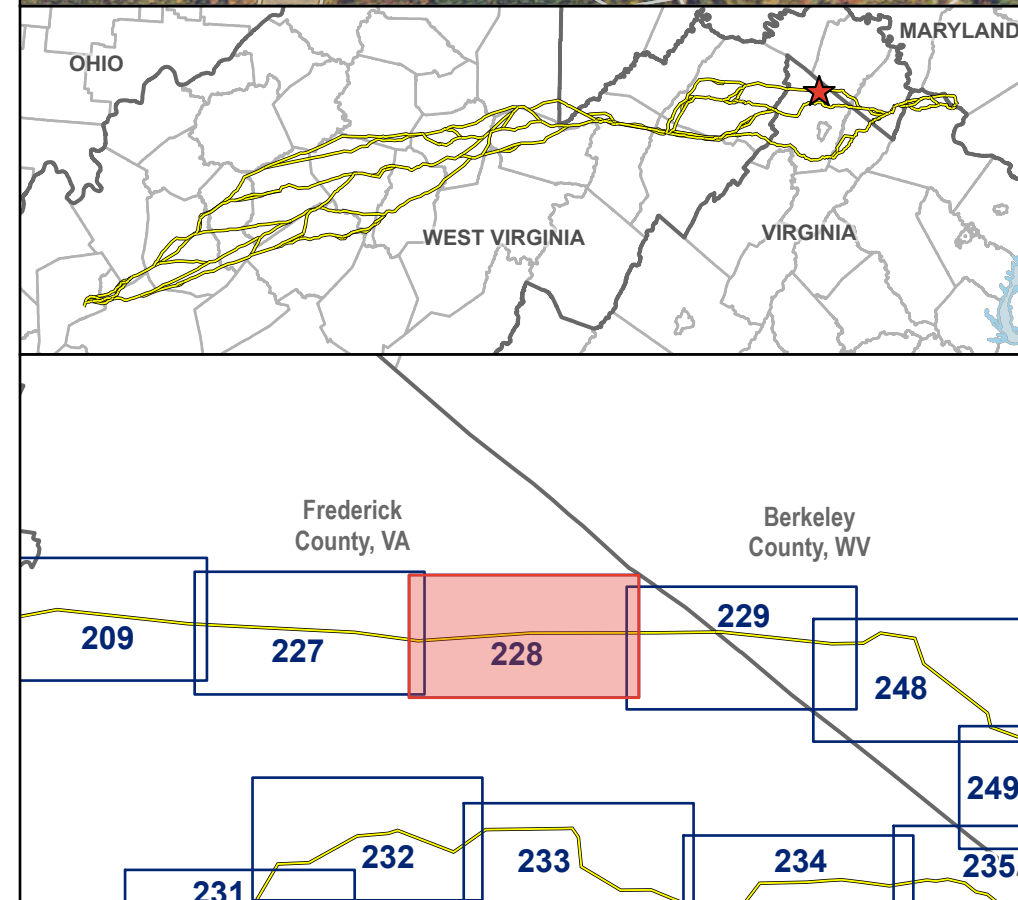
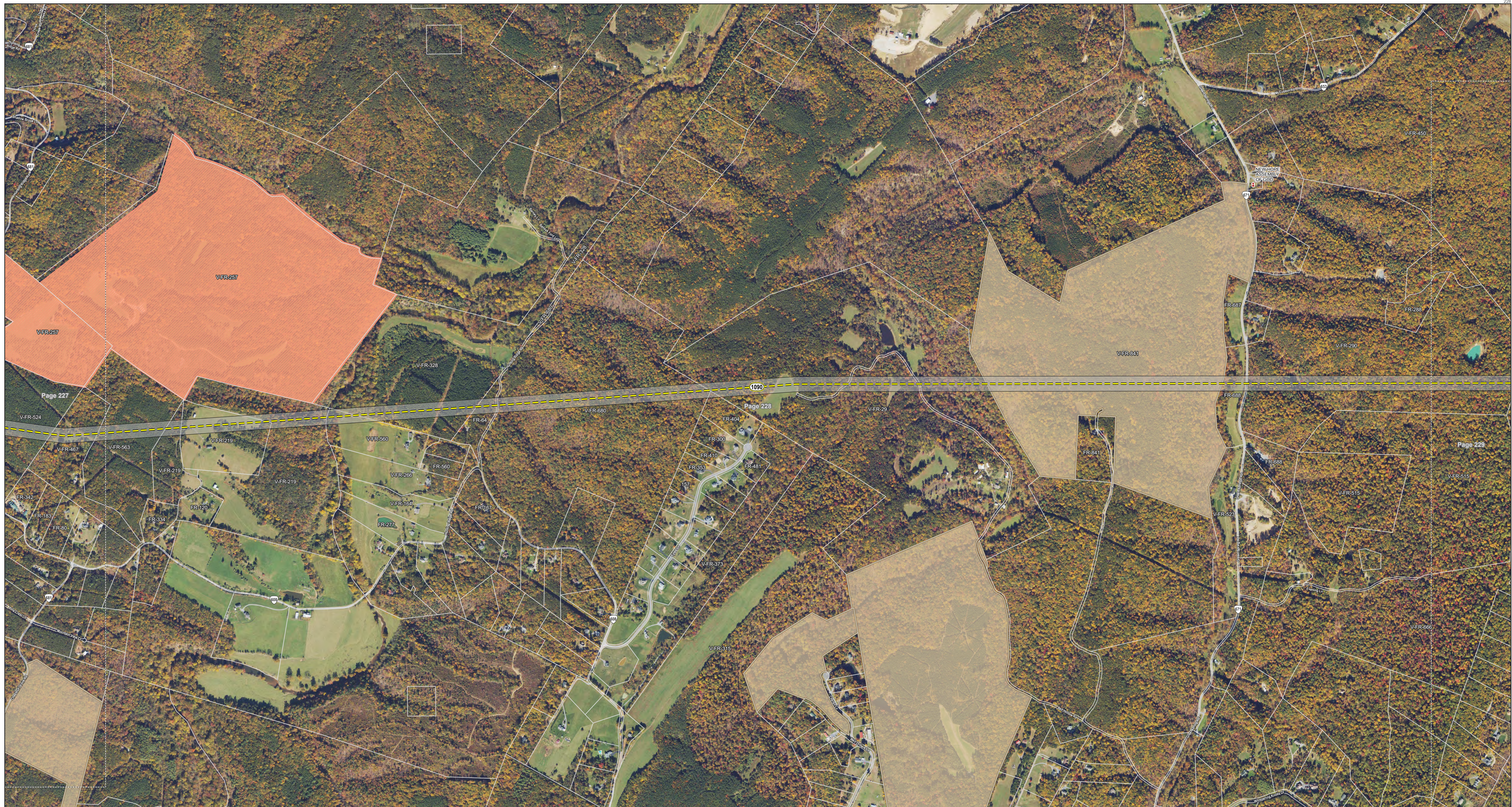
*Typical right-of-way is subject to change
 Study segments and rights-of-way shown are preliminary and for discussion purposes only. Study segments and rights-of-way are subject to change based on landowner input, engineering, ground surveys, and studies.

VALLEY LINK TRANSMISSION COMPANY, LLC
VALLEY NORTH PROJECT

Aerial Map Book
 Hampshire and Frederick Counties,
 West Virginia and Virginia



Path: \\corp.pbwan.net\US\CentralData\DCAME20\new_ga\Projects\258751_VLT_Arms_Wellon_Spring_Rocky_Point\apps\VLT_Public_Meetings_Rd_1\VLT_Public_Meetings_Rd_1.aprx

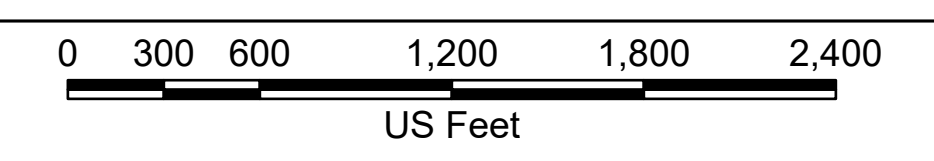


- Study Segment
- Study Segment Label
- Typical 200 ft Right-of-Way*
- Existing Transmission Line
- County Boundary
- Place of Worship
- Parcel Boundary
- VOF Conservation Easement
- Conservation Easement
- Agricultural Easement or Forestal District
- Page Boundary

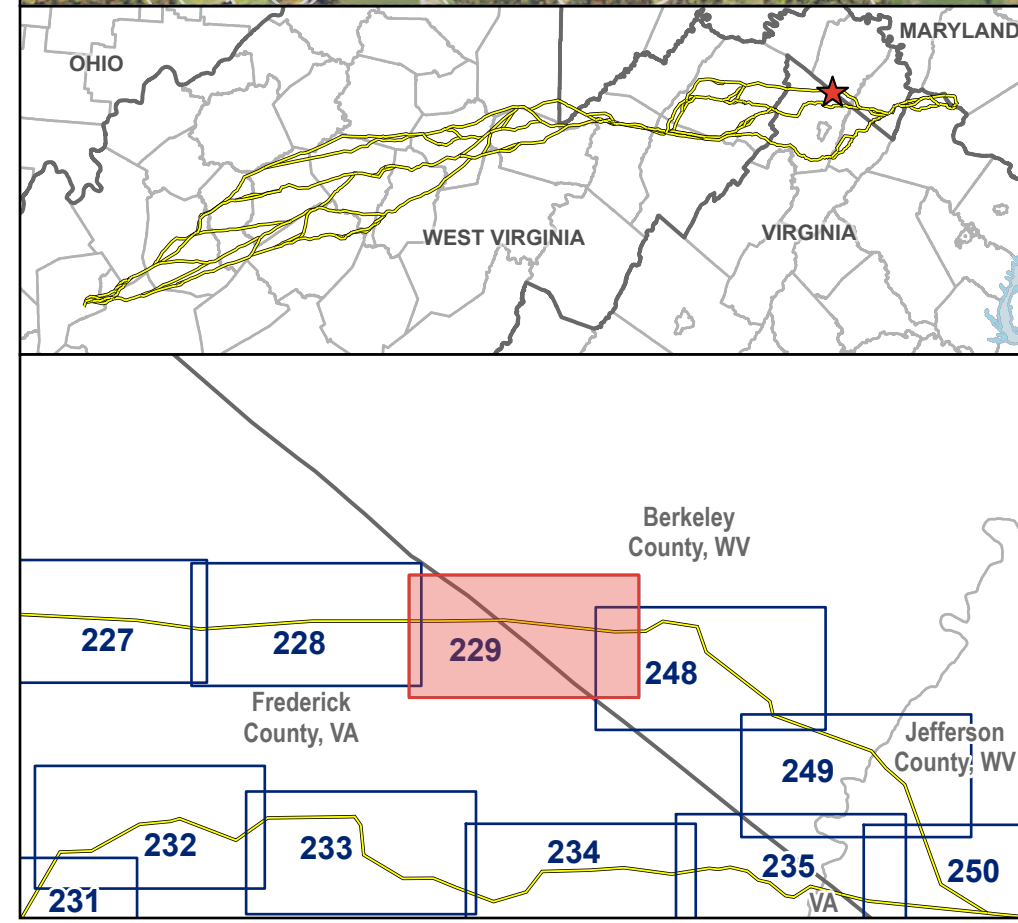
*Typical right-of-way is subject to change
Study segments and rights-of-way shown are preliminary and for discussion purposes only. Study segments and rights-of-way are subject to change based on landowner input, engineering, ground surveys, and studies.

VALLEY LINK TRANSMISSION COMPANY, LLC
VALLEY NORTH PROJECT

Aerial Map Book
Frederick County,
Virginia



Path: \\corp.pbwan.net\US-CentralData\DCAME20\new_gal\Projects\258751_VLT_Arms_Wellon_Spring_Rocky_Point\apps\VLT_Public_Meetings_Rd_1\VLT_Public_Meetings_Rd_1.aprx

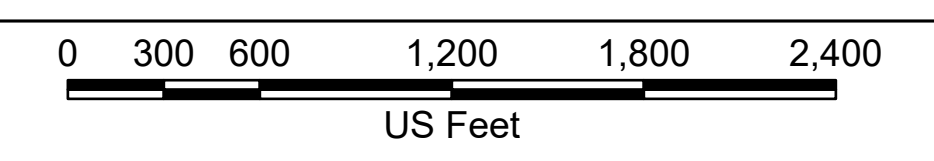


- Study Segment
- Ⓞ Study Segment Label
- Typical 200 ft Right-of-Way*
- ✈ Private Airport
- Existing Transmission Line
- State Boundary
- County Boundary
- Ⓜ Cemetery
- Ⓜ Place of Worship
- Parcel Boundary
- Agricultural Easement or Forestal District
- NRHP Point
- Page Boundary

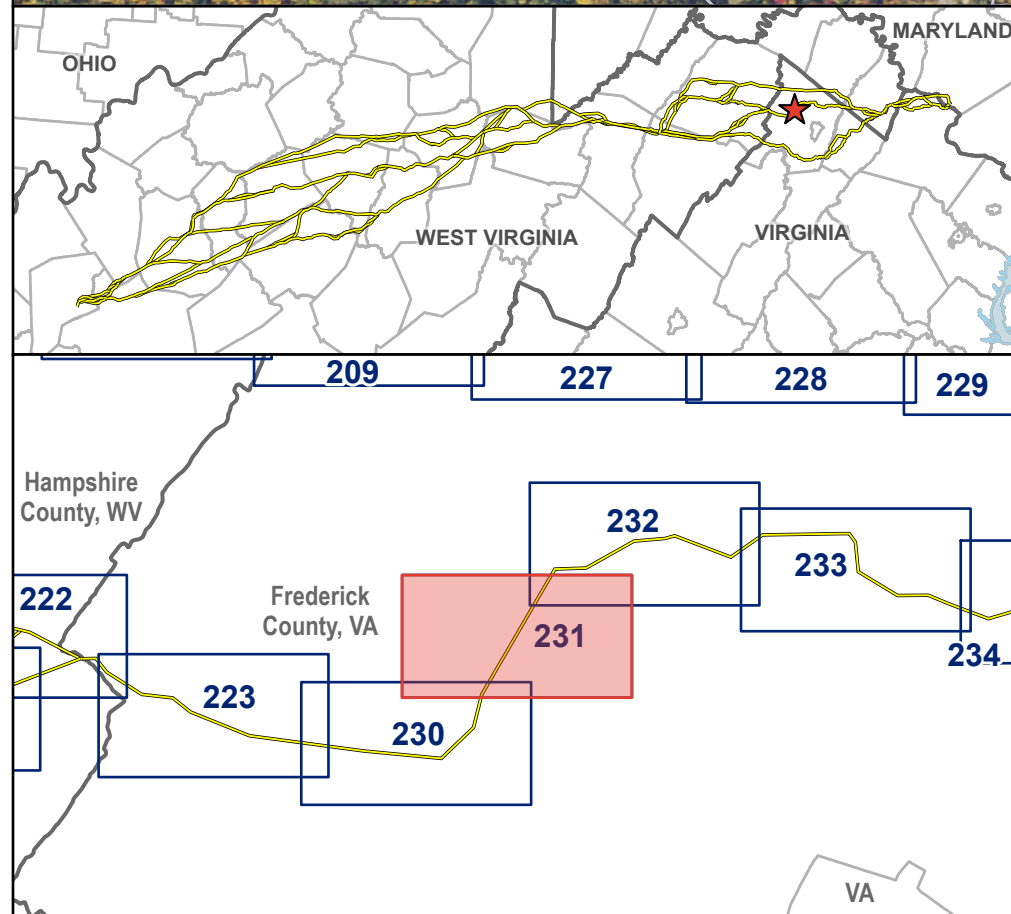
*Typical right-of-way is subject to change
 Study segments and rights-of-way shown are preliminary and for discussion purposes only. Study segments and rights-of-way are subject to change based on landowner input, engineering, ground surveys, and studies.

VALLEY LINK TRANSMISSION COMPANY, LLC
VALLEY NORTH PROJECT

Aerial Map Book
 Frederick and Berkeley Counties,
 Virginia and West Virginia



Path: \\corp.pbwan.net\US-CentralData\DCAME20\new_gal\Projects\258751_VLT_Armas_Wellon_Spring_Rocky_Point\apps\VLT_Public_Meetings_Rd_1\VLT_Public_Meetings_Rd_1.aprx

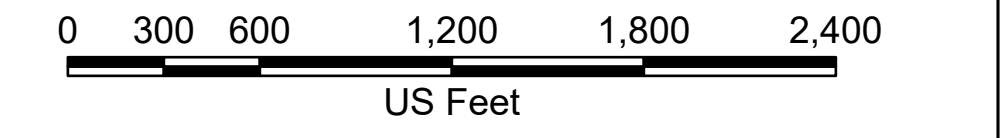


	Study Segment
	Study Segment Label
	Typical 200 ft Right-of-Way*
	Railroad
	Existing Transmission Line
	County Boundary
	School
	Place of Worship
	Parcel Boundary
	Local Park or Recreation Area
	VOF Conservation Easement
	Conservation Easement
	NRHP Point
	Page Boundary

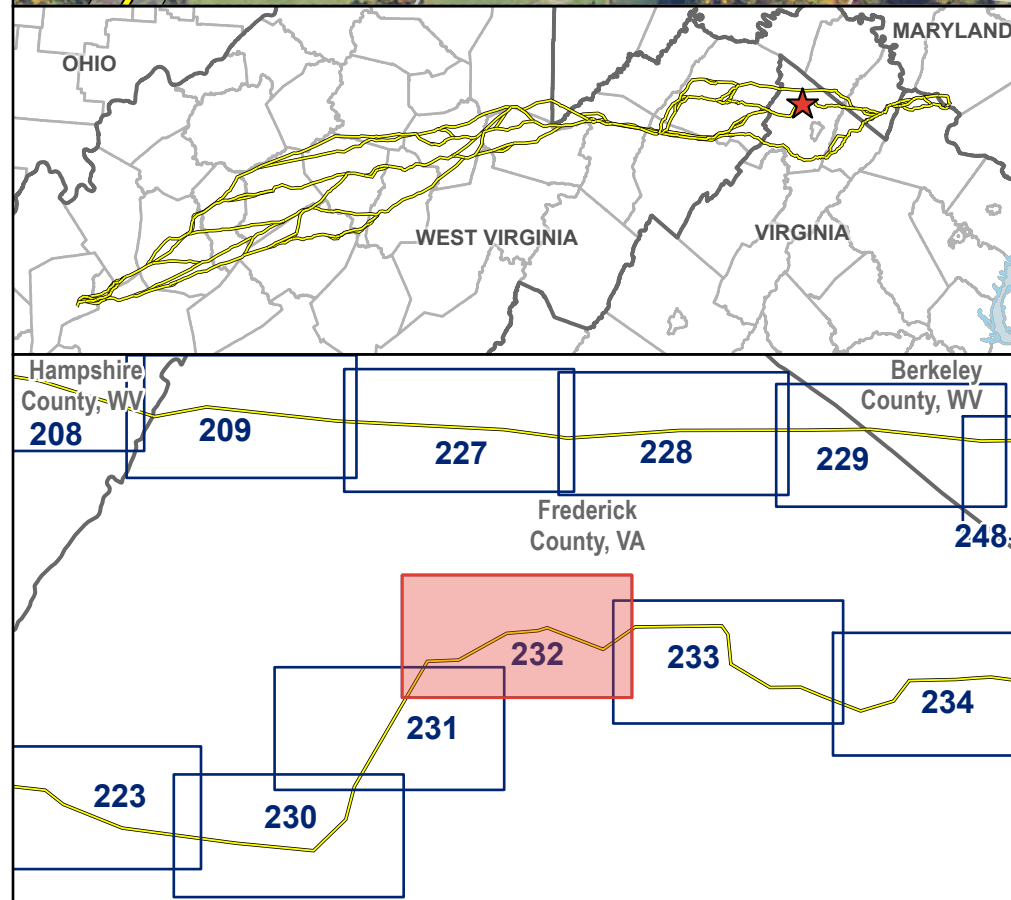
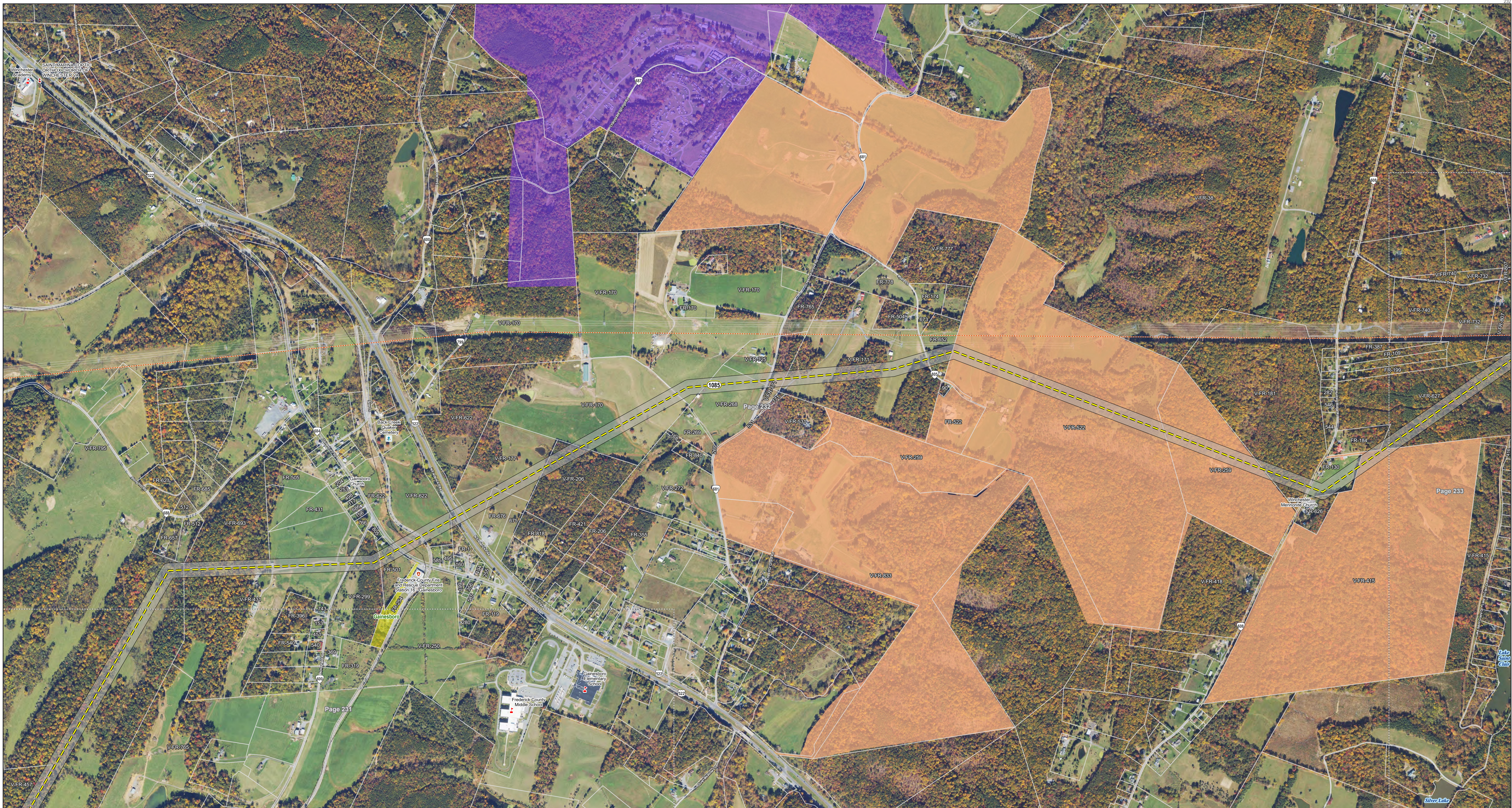
*Typical right-of-way is subject to change
Study segments and rights-of-way shown are preliminary and for discussion purposes only. Study segments and rights-of-way are subject to change based on landowner input, engineering, ground surveys, and studies.

VALLEY LINK TRANSMISSION COMPANY, LLC
VALLEY NORTH PROJECT

Aerial Map Book
Frederick County,
Virginia



Path: \\corp.pbwan.net\US\CentralData\DCAME20\new_gal\Projects\258751_VLT_Armas_Wellton_Spring_Rocky_Point\apps\ILT_Public_Meetings_Rd_1\ILT_Public_Meetings_Rd_1.aprx

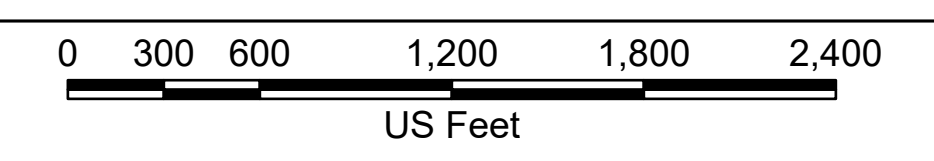


- Study Segment
- Study Segment Label
- Typical 200 ft Right-of-Way*
- Railroad
- Existing Transmission Line
- County Boundary
- + Cemetery
- + Fire Station / EMS Station
- + School
- + Place of Worship
- Parcel Boundary
- Local Park or Recreation Area
- Private Conservation or Reserve
- Conservation Easement
- Page Boundary

*Typical right-of-way is subject to change
 Study segments and rights-of-way shown are preliminary and for discussion purposes only. Study segments and rights-of-way are subject to change based on landowner input, engineering, ground surveys, and studies.

VALLEY LINK TRANSMISSION COMPANY, LLC
VALLEY NORTH PROJECT

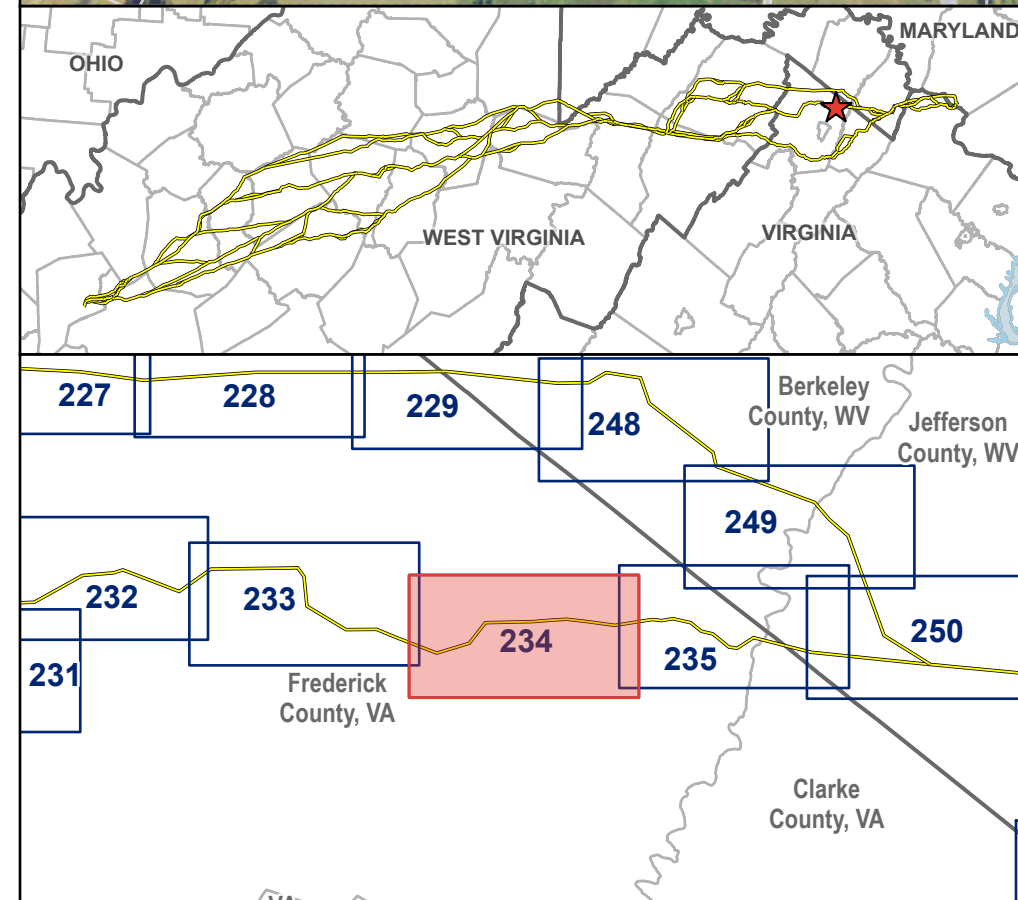
Aerial Map Book
 Frederick County,
 Virginia



Page 232 of 263

June 2026





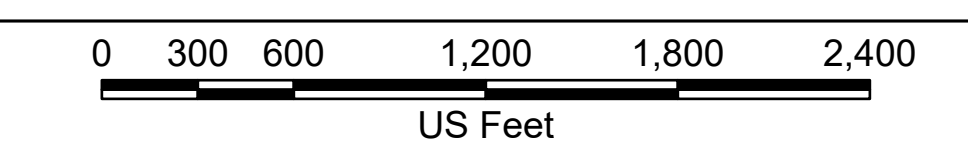
- Study Segment
- Study Segment Label
- Typical 200 ft Right-of-Way*
- Railroad
- Existing Substation
- Existing Transmission Line
- County Boundary
- + Cemetery
- + Government Building

- Fire Station / EMS Station
- + School
- + Place of Worship
- Parcel Boundary
- Local Park or Recreation Area
- Conservation Easement
- NRHP Point
- Page Boundary

*Typical right-of-way is subject to change
 Study segments and rights-of-way shown are preliminary and for discussion purposes only. Study segments and rights-of-way are subject to change based on landowner input, engineering, ground surveys, and studies.

VALLEY LINK TRANSMISSION COMPANY, LLC
VALLEY NORTH PROJECT

Aerial Map Book
 Frederick County,
 Virginia

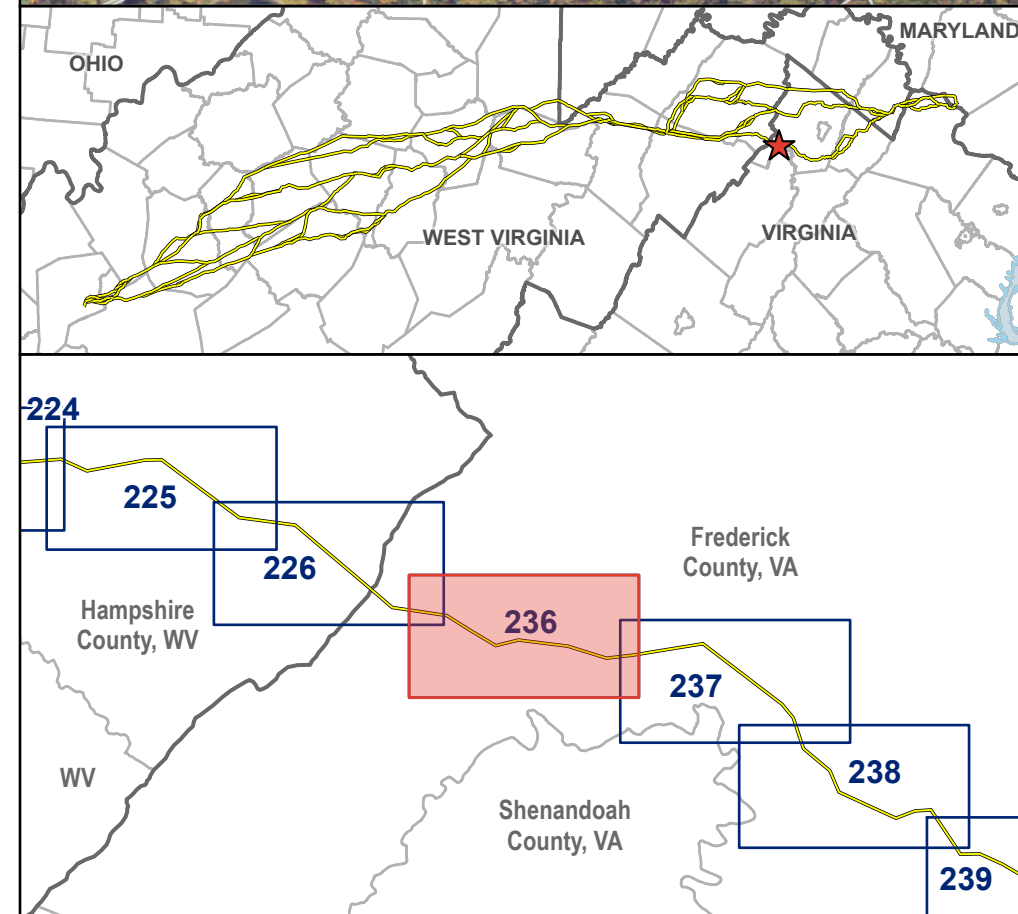
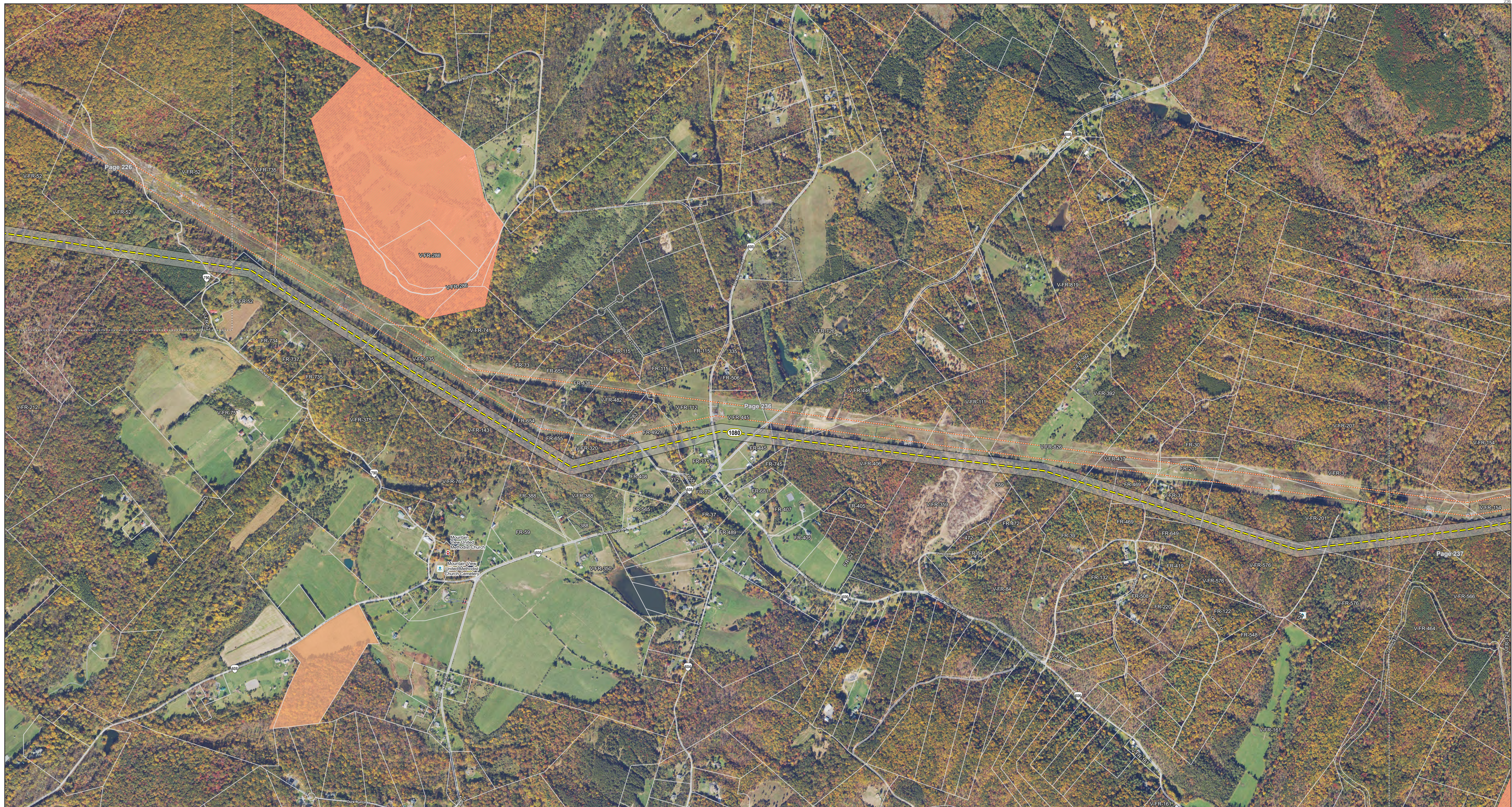


Page 234 of 263

June 2026



Path: \\corp.pbwan.net\US\CentralData\DCAME20\new_gal\Projects\258751_VLT_Armas_Wellon_Spring_Rocky_Point\apps\VLT_Public_Meetings_Rd_1\VLT_Public_Meetings_Rd_1.aprx

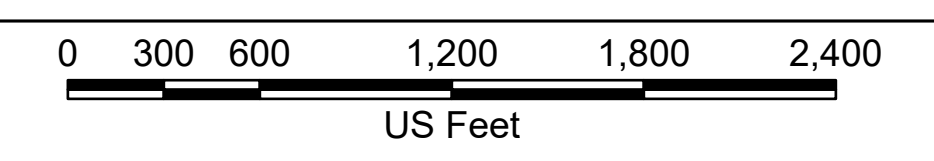


- Study Segment
- Study Segment Label
- Typical 200 ft Right-of-Way*
- Existing Transmission Line
- County Boundary
- + Cemetery
- + Place of Worship
- Parcel Boundary
- VOF Conservation Easement
- Conservation Easement
- Page Boundary

*Typical right-of-way is subject to change
 Study segments and rights-of-way shown are preliminary and for discussion purposes only. Study segments and rights-of-way are subject to change based on landowner input, engineering, ground surveys, and studies.

VALLEY LINK TRANSMISSION COMPANY, LLC
VALLEY NORTH PROJECT

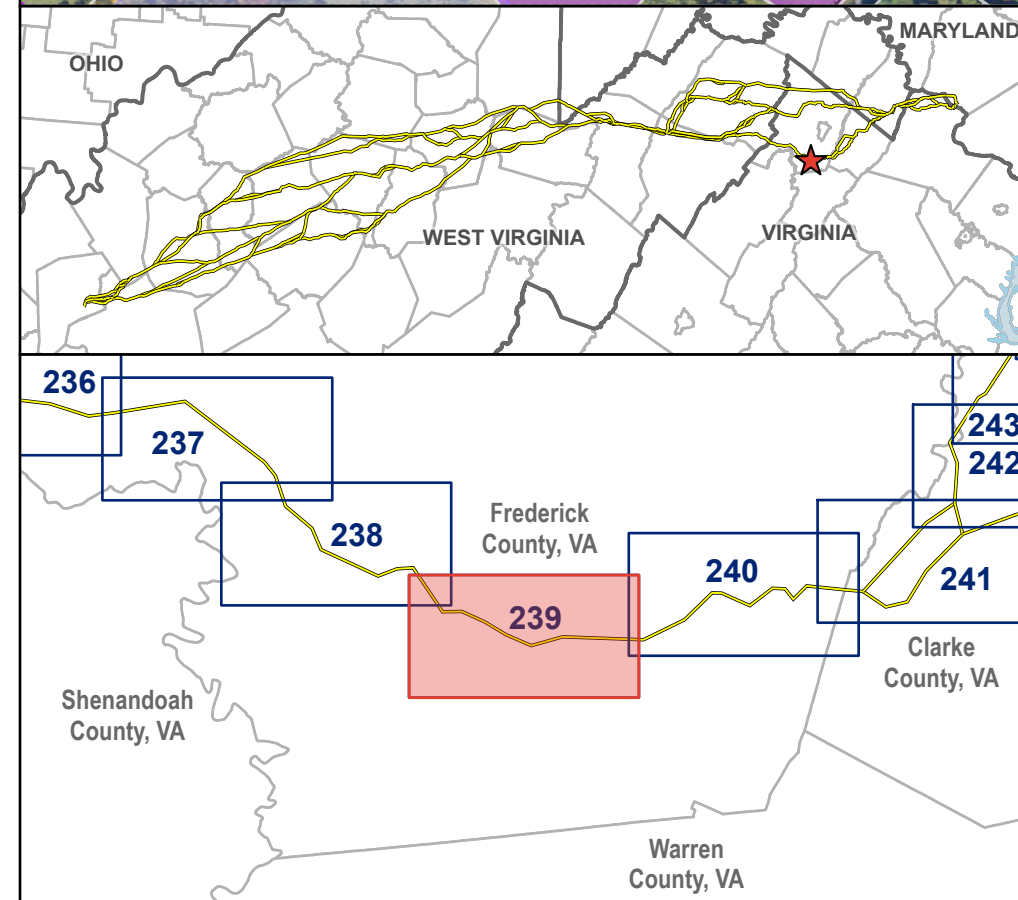
Aerial Map Book
 Frederick County,
 Virginia



Page 236 of 263

June 2026

Path: \\corp.pbwan.net\US-CentralData\DCAME20\new_ga\Projects\258751_VLT_Armas_Wellon_Spring_Rocky_Point\apps\ILT_Public_Meetings_Rd_1\ILT_Public_Meetings_Rd_1.aprx



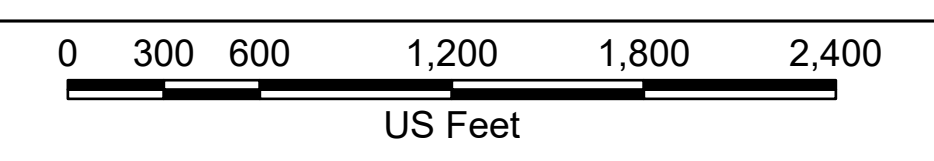
- - - Study Segment
- Study Segment Label
- Typical 200 ft Right-of-Way*
- Railroad
- Existing Substation
- Existing Transmission Line
- County Boundary
- Town or Municipal Boundary

- + Cemetery
- + Place of Worship
- Parcel Boundary
- Private Conservation or Reserve
- Conservation Easement
- Agricultural Easement or Forestal District
- NRHP District Polygon
- Page Boundary

*Typical right-of-way is subject to change
 Study segments and rights-of-way shown are preliminary and for discussion purposes only. Study segments and rights-of-way are subject to change based on landowner input, engineering, ground surveys, and studies.

VALLEY LINK TRANSMISSION COMPANY, LLC
VALLEY NORTH PROJECT

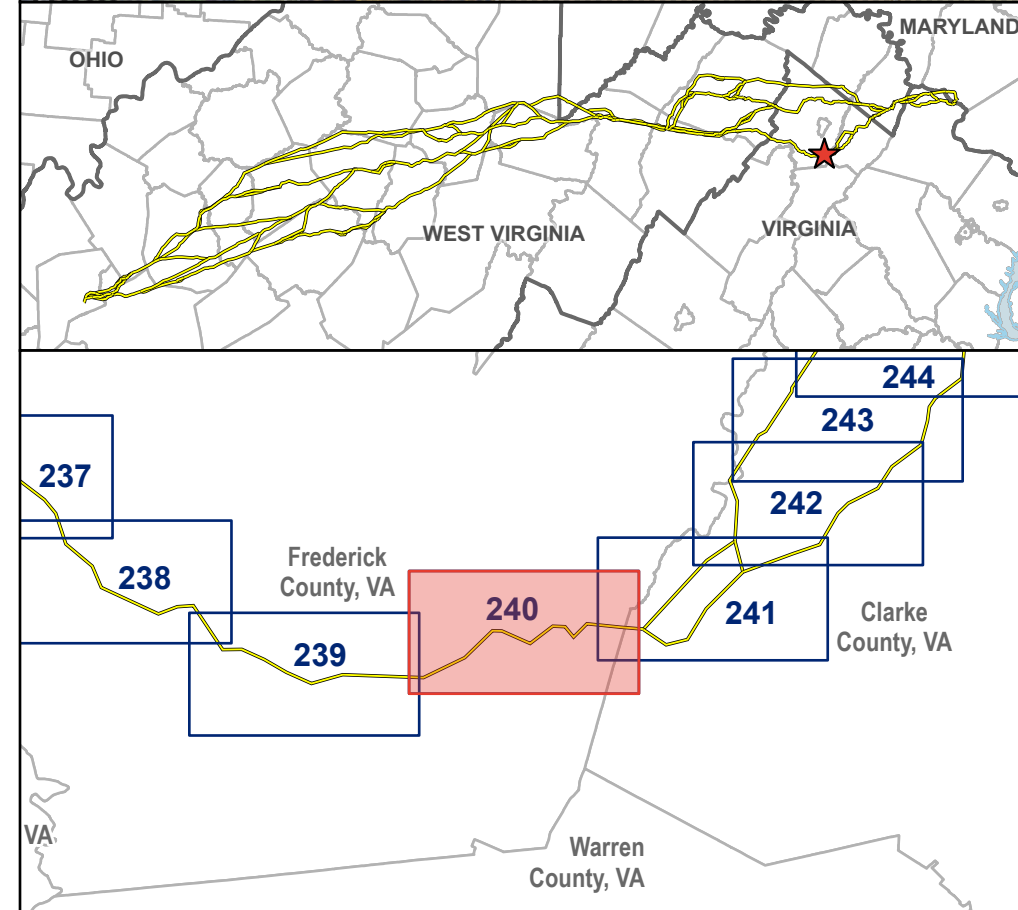
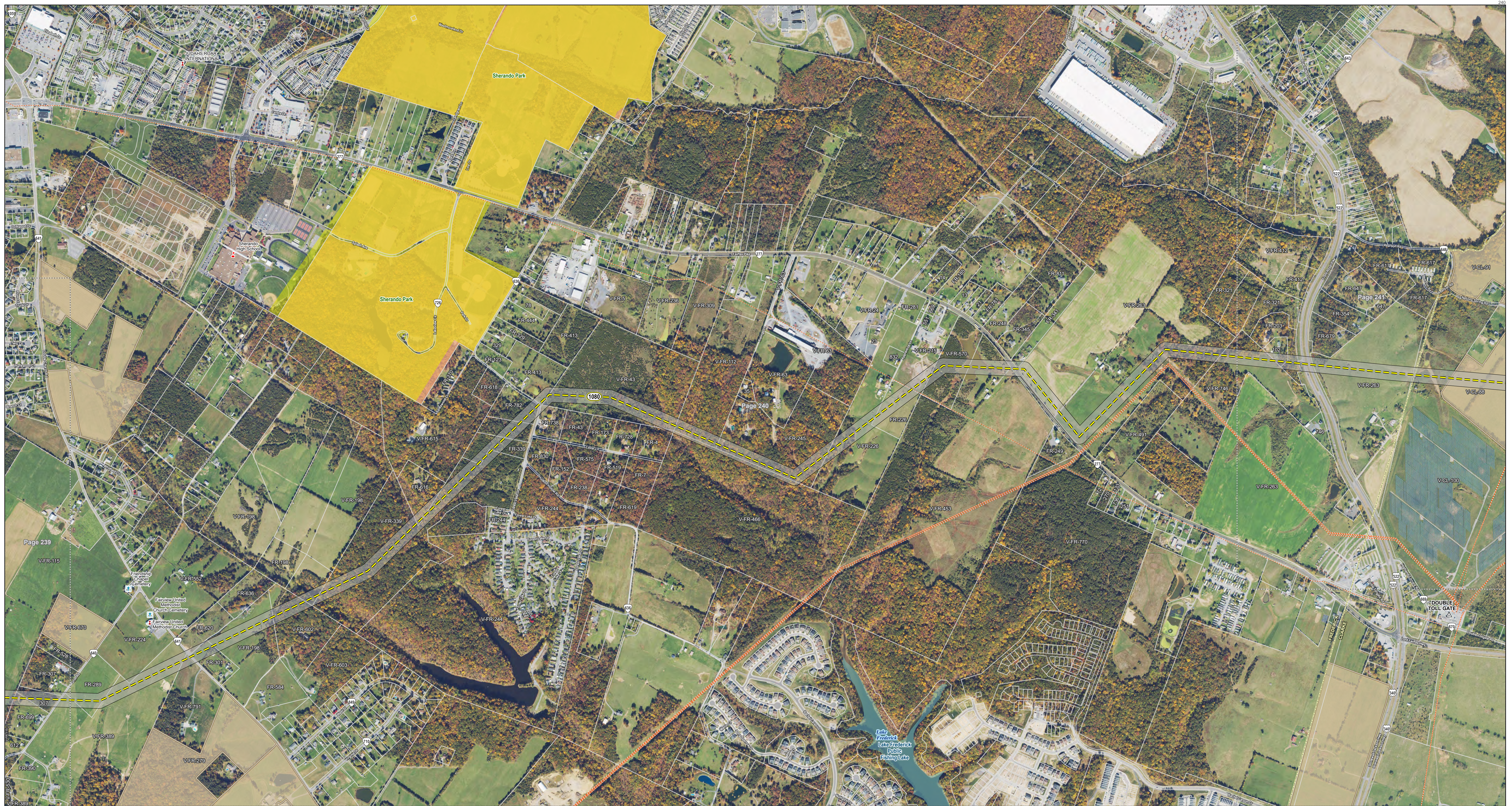
Aerial Map Book
 Frederick County,
 Virginia



Page 239 of 263



June 2026

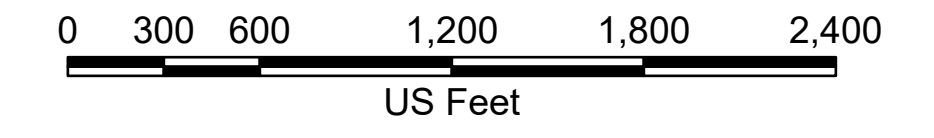


- Study Segment
- Study Segment Label
- Typical 200 ft Right-of-Way*
- Existing Substation
- Existing Transmission Line
- County Boundary
- + Cemetery
- + School
- + Place of Worship
- Parcel Boundary
- State Park, Recreation, or Conservation Area
- Local Park or Recreation Area
- Conservation Easement
- Agricultural Easement or Forestal District
- Page Boundary

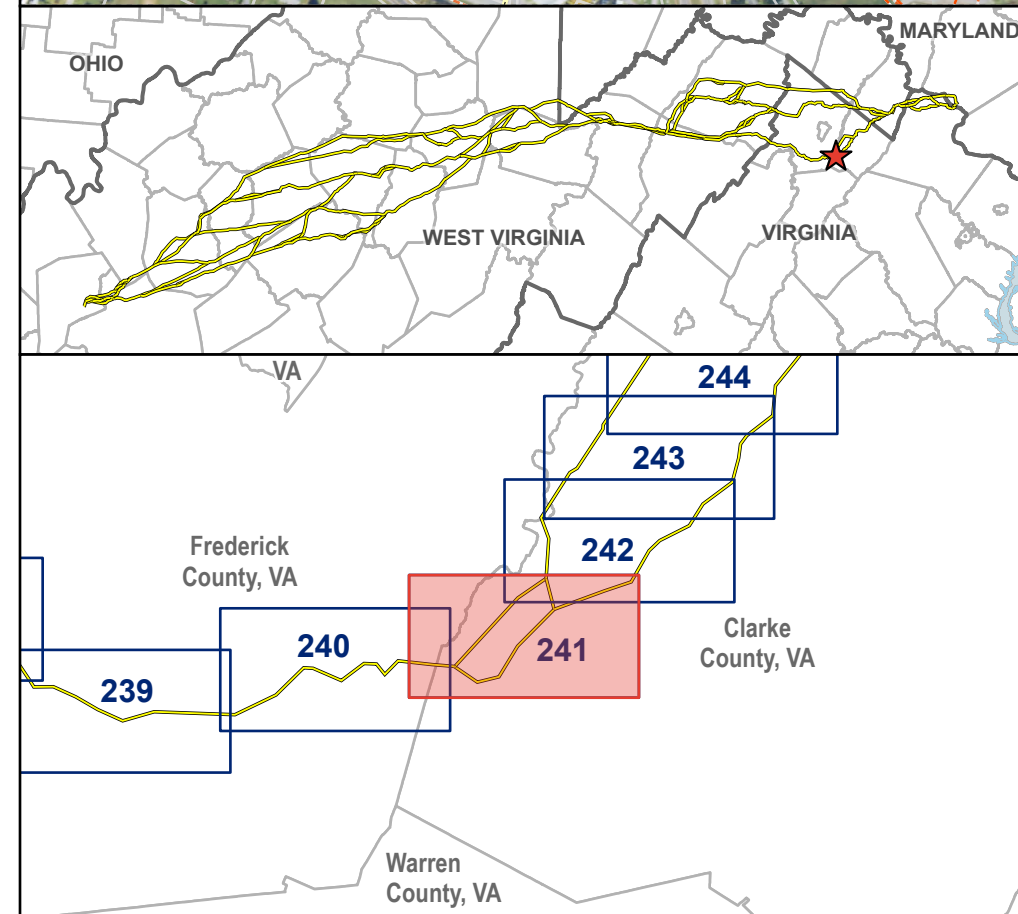
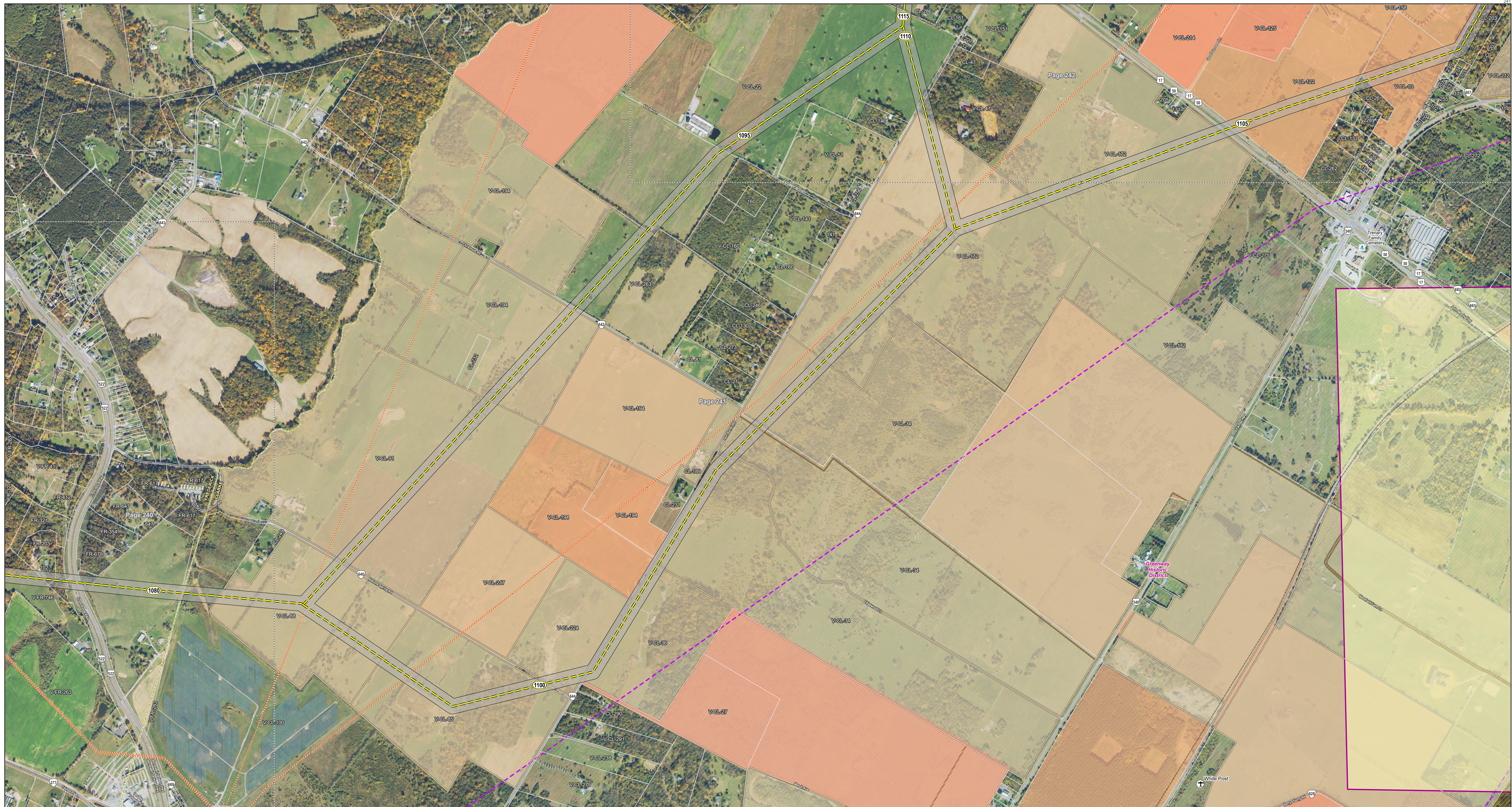
*Typical right-of-way is subject to change
 Study segments and rights-of-way shown are preliminary and for discussion purposes only. Study segments and rights-of-way are subject to change based on landowner input, engineering, ground surveys, and studies.

VALLEY LINK TRANSMISSION COMPANY, LLC
VALLEY NORTH PROJECT

Aerial Map Book
 Frederick and Clarke Counties,
 Virginia



Path: \\corp.pbwan.net\US-CentralData\DCAME20\new_gal\Projects\258751_VLT_Armas_Wellton_Spring_Rocky_Point\apps\VLT_Public_Meetings_Rd_1\VLT_Public_Meetings_Rd_1.aprx



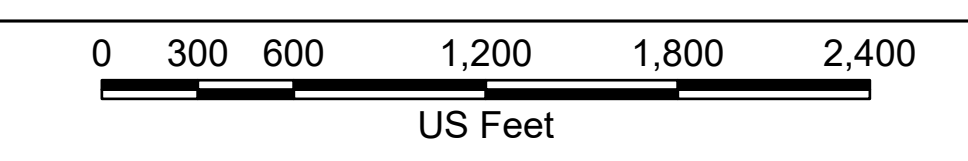
- Study Segment
- Study Segment Label
- Typical 200 ft Right-of-Way*
- Railroad
- Private Airport
- Existing Transmission Line
- County Boundary
- Cemetery
- Parcel Boundary

- Local Park or Recreation Area
- Other Protected Lands
- VOF Conservation Easement
- Conservation Easement
- Agricultural Easement or Forestal District
- NRHP Polygon
- NRHP District Polygon
- Page Boundary

*Typical right-of-way is subject to change
 Study segments and rights-of-way shown are preliminary and for discussion purposes only. Study segments and rights-of-way are subject to change based on landowner input, engineering, ground surveys, and studies.

VALLEY LINK TRANSMISSION COMPANY, LLC
VALLEY NORTH PROJECT

Aerial Map Book
 Frederick and Clarke Counties,
 Virginia



Path: \\corp.pbwan.net\US\CentralData\DCAME20\new_gis\Projects\258751_VLT_Armas_Welton_Spring_Rocky_Point\apps\ILT_Public_Meetings_Rd_1\ILT_Public_Meetings_Rd_1.aprx