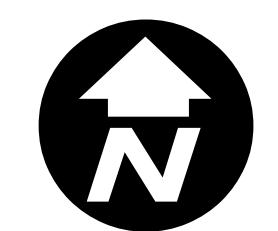
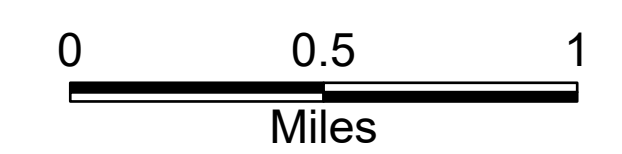
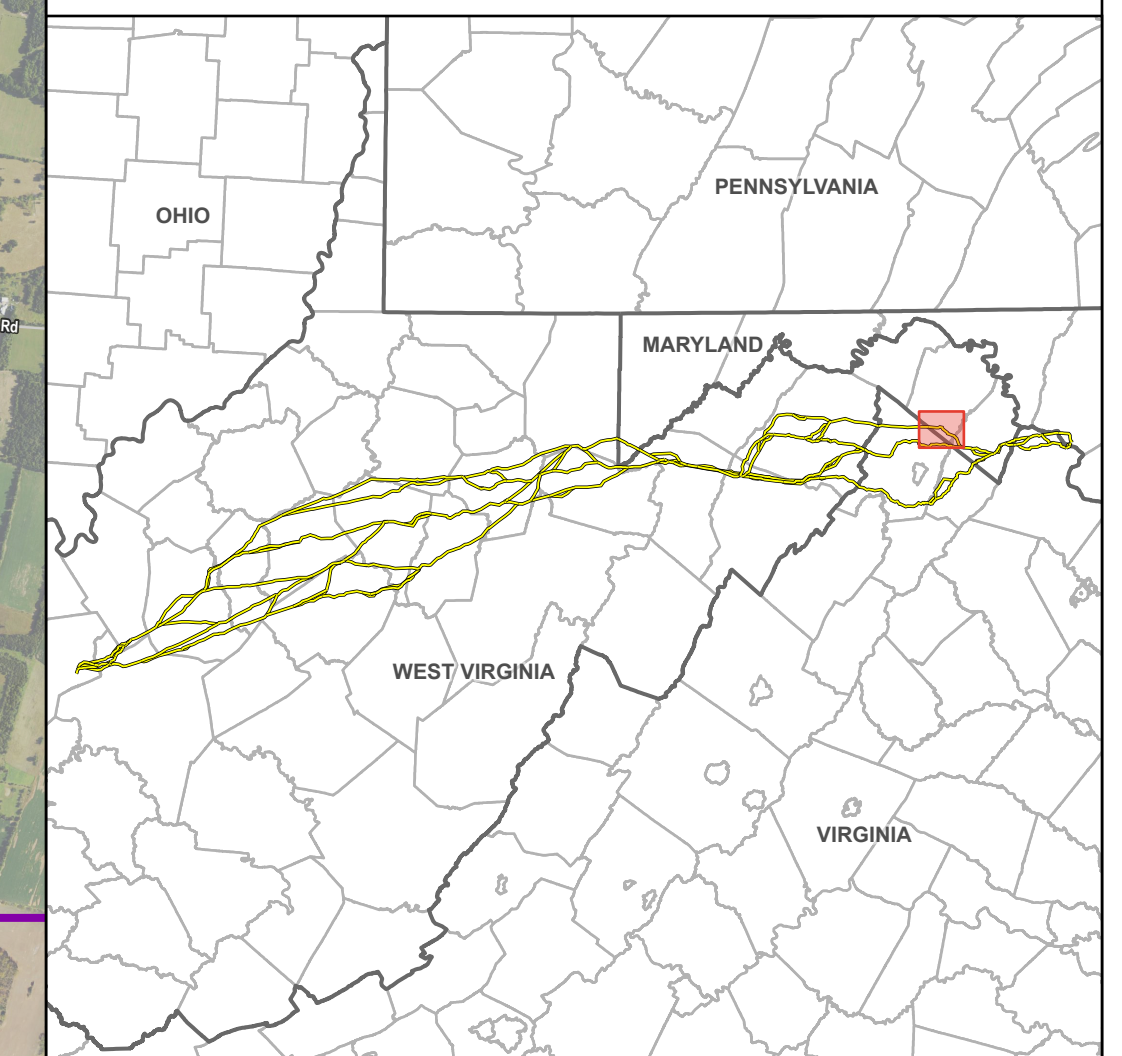
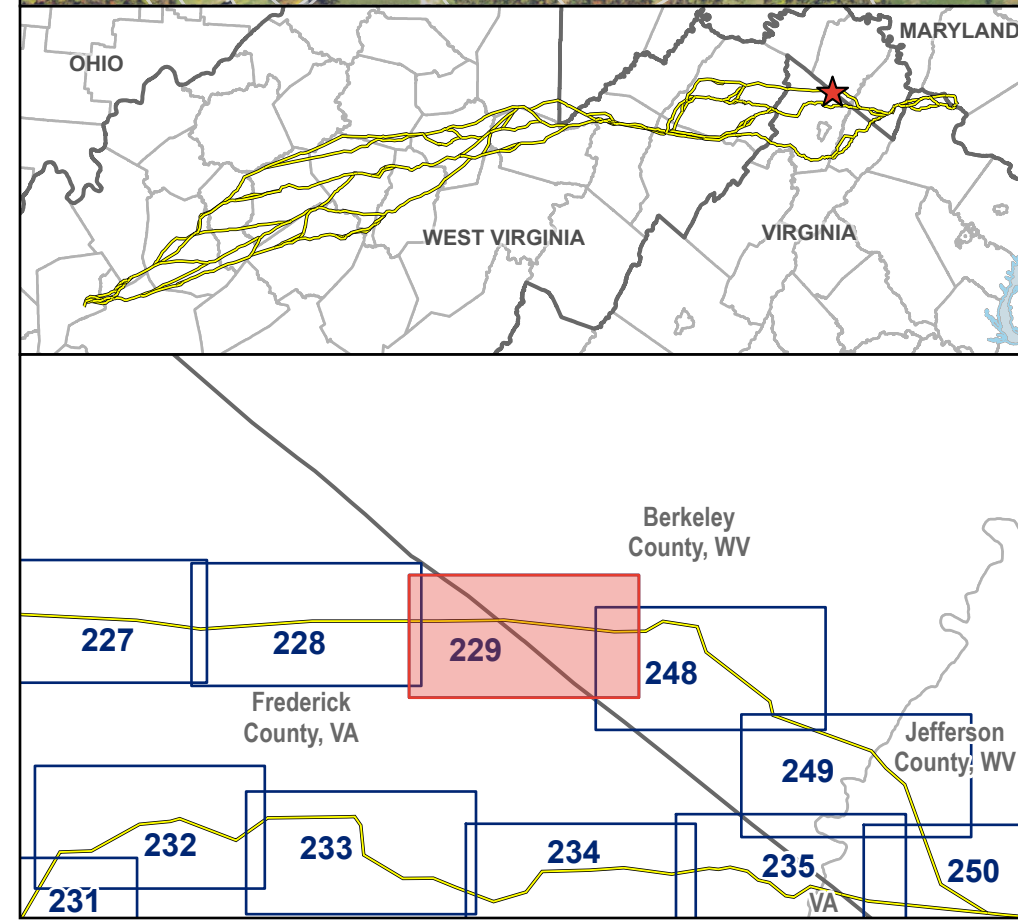


# County Overview Berkeley County, WV

- Study Segment
- Study Segment Label
- Aerial Map Book Index
- Private Airport
- Place of Worship
- Ambulance Service
- Cemetery
- Fire Station / EMS Station
- School
- Existing Substation
- Existing Transmission Line
- State Boundary
- County Boundary
- Town or Municipal Boundary
- Local Park or Recreation Area
- Conservation Easement
- Agricultural Easement or Forestal District

Study segments and rights-of-way shown are preliminary and for discussion purposes only. Study segments and rights-of-way are subject to change based on landowner input, engineering, ground surveys, and studies.



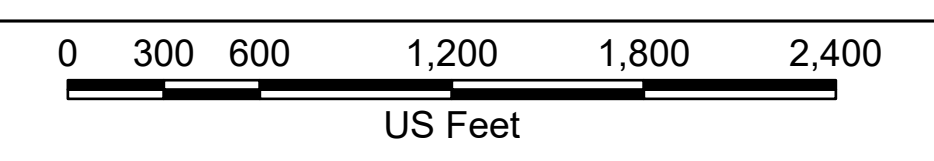


- Study Segment
- Study Segment Label
- Typical 200 ft Right-of-Way\*
- ✈ Private Airport
- Existing Transmission Line
- State Boundary
- County Boundary
- ☠ Cemetery
- ⛪ Place of Worship
- Parcel Boundary
- Agricultural Easement or Forestal District
- NRHP Point
- Page Boundary

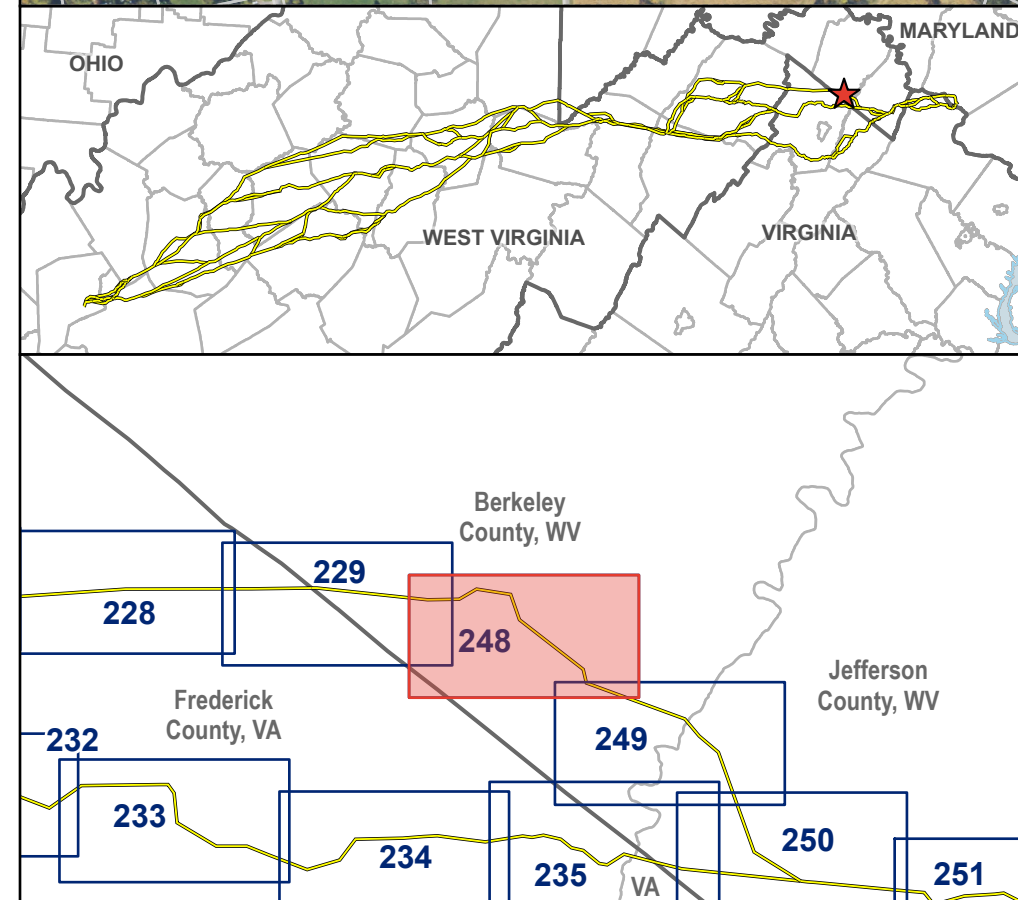
\*Typical right-of-way is subject to change  
 Study segments and rights-of-way shown are preliminary and for discussion purposes only. Study segments and rights-of-way are subject to change based on landowner input, engineering, ground surveys, and studies.

VALLEY LINK TRANSMISSION COMPANY, LLC  
**VALLEY NORTH PROJECT**

**Aerial Map Book**  
 Frederick and Berkeley Counties,  
 Virginia and West Virginia



Path: \\corp.pbwan.net\US-CentralData\DCAME20\new\_gal\Projects\258751\_VLT\_Armas\_Wellon\_Spring\_Rocky\_Point\Apps\VLT\_Public\_Meetings\_Rd\_1\VLT\_Public\_Meetings\_Rd\_1.aprx

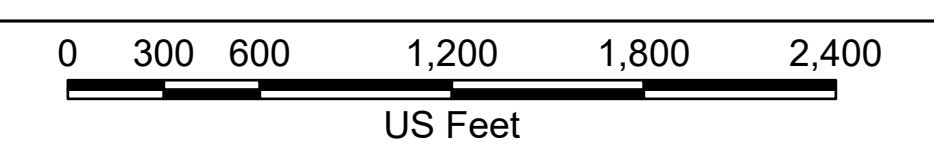


- Study Segment
- Ⓜ Study Segment Label
- Typical 200 ft Right-of-Way\*
- Railroad
- Existing Transmission Line
- State Boundary
- County Boundary
- School
- Parcel Boundary
- NRHP Point
- NRHP District Polygon
- Page Boundary

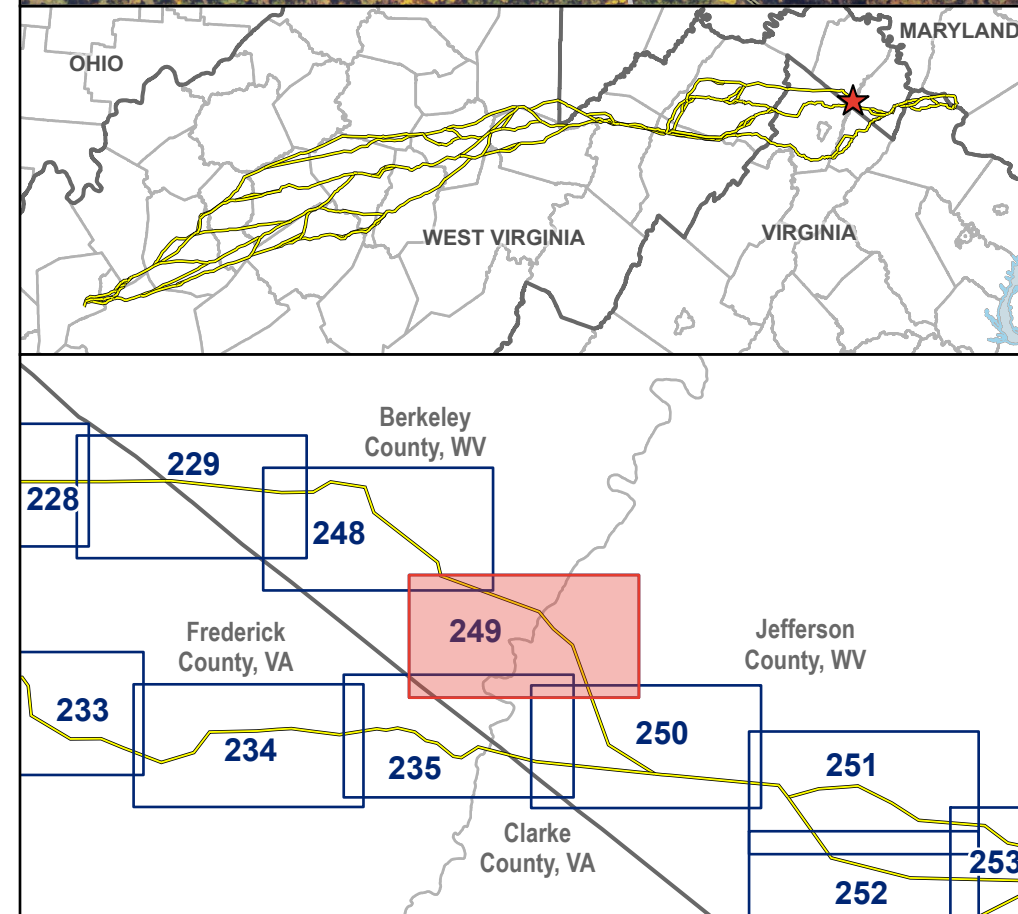
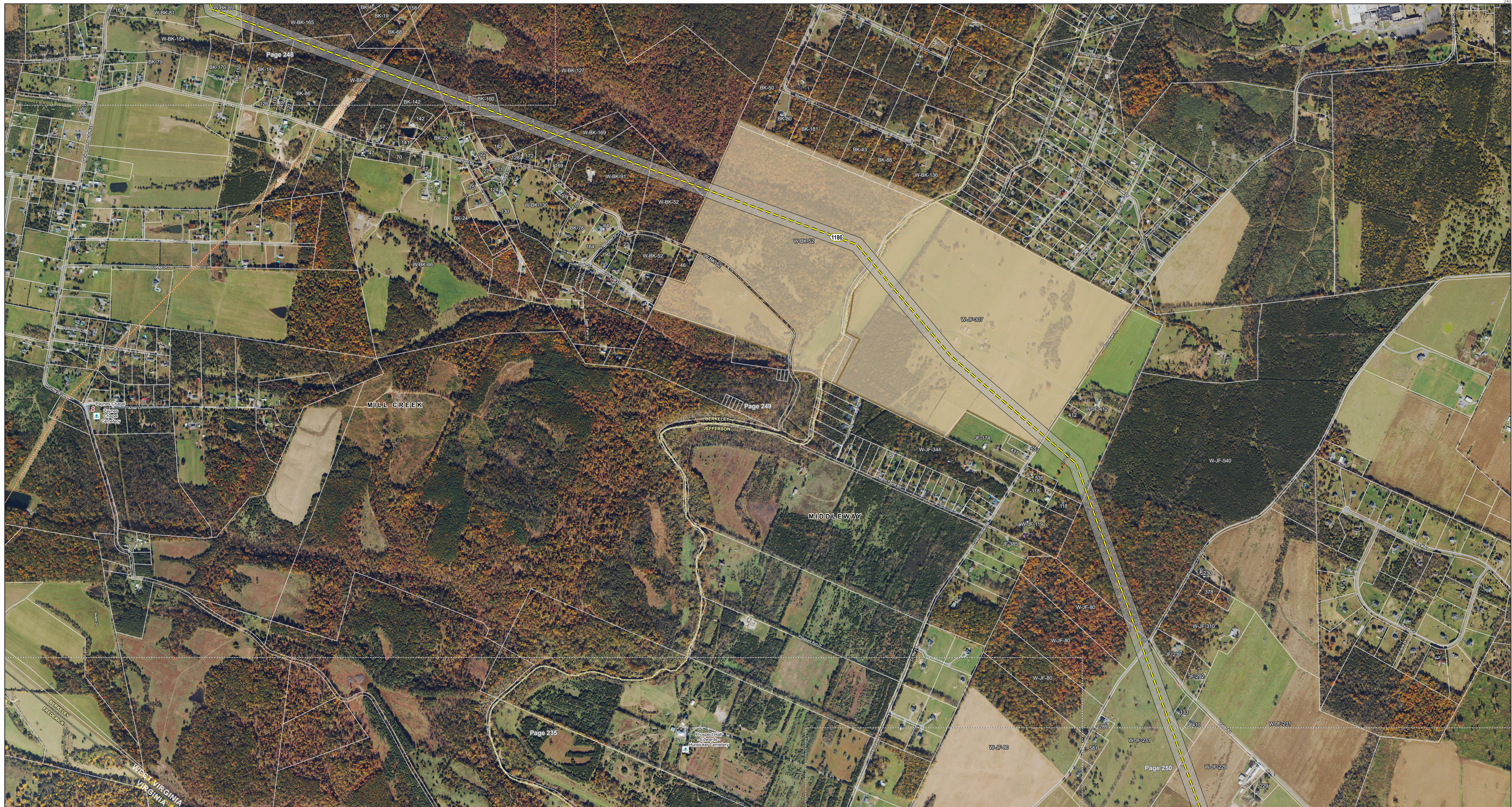
\*Typical right-of-way is subject to change  
 Study segments and rights-of-way shown are preliminary and for discussion purposes only. Study segments and rights-of-way are subject to change based on landowner input, engineering, ground surveys, and studies.

VALLEY LINK TRANSMISSION COMPANY, LLC  
**VALLEY NORTH PROJECT**

**Aerial Map Book**  
 Berkeley County,  
 West Virginia



Path: \\corp.pbwan.net\US-CentralData\DCAME20\new\_gal\Projects\258751\_VLT\_Armas\_Wellon\_Spring\_Rocky\_Point\Map\Public\_Meetings\_Rd\_1\VLT\_Public\_Meetings\_Rd\_1.aprx

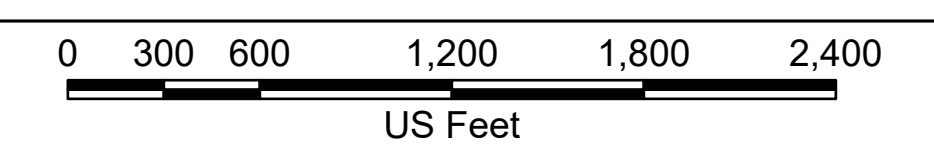


- Study Segment
- 1180 Study Segment Label
- Typical 200 ft Right-of-Way\*
- Existing Transmission Line
- State Boundary
- County Boundary
- + Cemetery
- + Place of Worship
- Parcel Boundary
- Agricultural Easement or Forestal District
- Page Boundary

\*Typical right-of-way is subject to change  
 Study segments and rights-of-way shown are preliminary and for discussion purposes only. Study segments and rights-of-way are subject to change based on landowner input, engineering, ground surveys, and studies.

VALLEY LINK TRANSMISSION COMPANY, LLC  
**VALLEY NORTH PROJECT**

**Aerial Map Book**  
 Berkeley and Jefferson Counties,  
 West Virginia



Path: \\corp.pbwan.net\US-CentralData\DCAME20\new\_gal\Projects\258751\_VLT\_Arma\_Wellon\_Spring\_Rocky\_Point\apps\VLT\_Public\_Meetings\_Rd\_1\VLT\_Public\_Meetings\_Rd\_1.aprx